



# 目 录

## CONTENTS

电磁阀型号命名规则 .....	01
Solenoid Valve Model Index	
JL000 系列水阀 .....	02
JL000 Solenoid Valve	
JL000 进水电磁阀 .....	03
JL000 Valve	
JL000 带废水电磁阀 .....	04
JL000 Wastewater Valve	
JL000 系列常开阀 .....	05
JL000 Normal Open Valve	
JL002 系列水阀 .....	06
JL002 Valve	
JL003 系列1/4"快接式水阀 .....	07
JL003 Solenoid Valve	
JL003 系列1/4"快接式带废水比电磁阀 .....	08
JL003 Wastewater Valve	
JL003 系列1/4"快接式水阀 .....	09
JL003 Solenoid Valve	
JL003 系列1/4"快接式带废水比电磁阀 .....	10
JL003 Wastewater Valve	
JL006 系列1/4"管螺纹水阀 .....	11
JL006 G1/4 Solenoid Valve	
JL006 系列1/4"管螺纹带废水比水阀 .....	12
JL006 Wastewater Valve	
JL006 系列1/4"管螺纹常开阀 .....	13
JL006 G1/4 Normal Open Valve	
JL007 系列水阀 .....	14
JL007 Solenoid Valve	
JL008 系列1/4"管螺纹水阀 .....	15
JL008 G1/4 Solenoid Valve	
JL009 系列水阀 .....	16-17
JL009 Valve	
JL010 系列水阀 .....	18
JL010 Valve	
可选线圈端子引线类型 .....	19
Coil Wire Assy Option	
电磁阀应用选型 .....	20
The Information for solenoid valve choose	



## 一、电磁阀产品型号编制规则

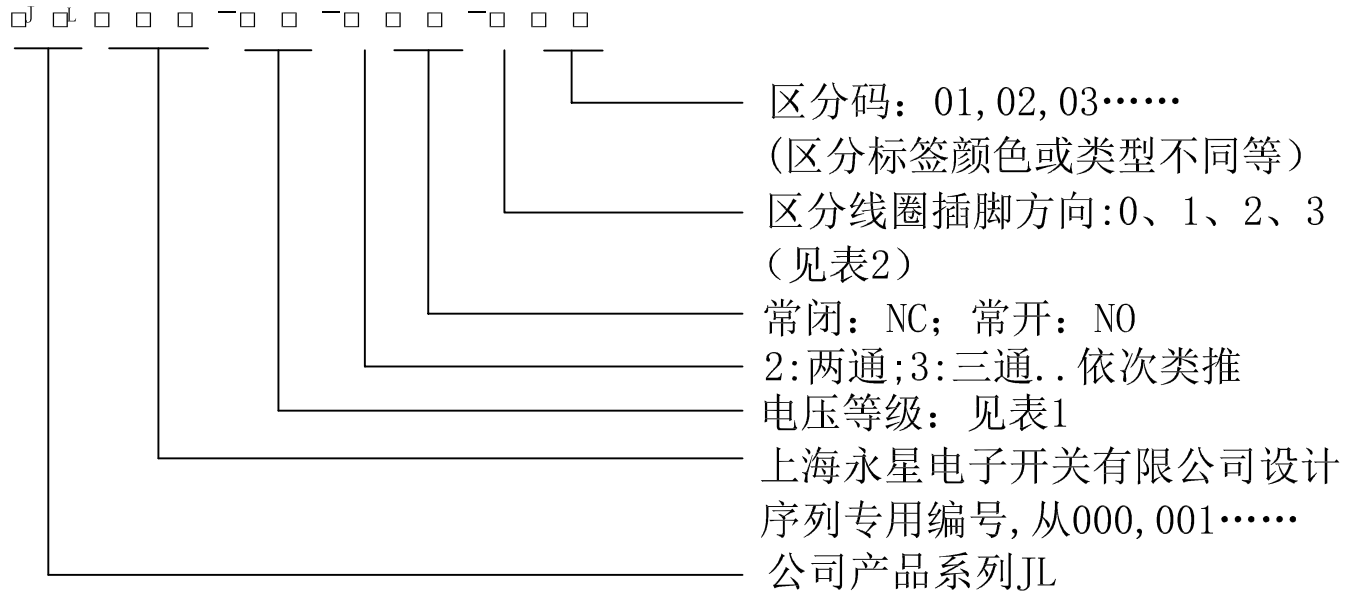
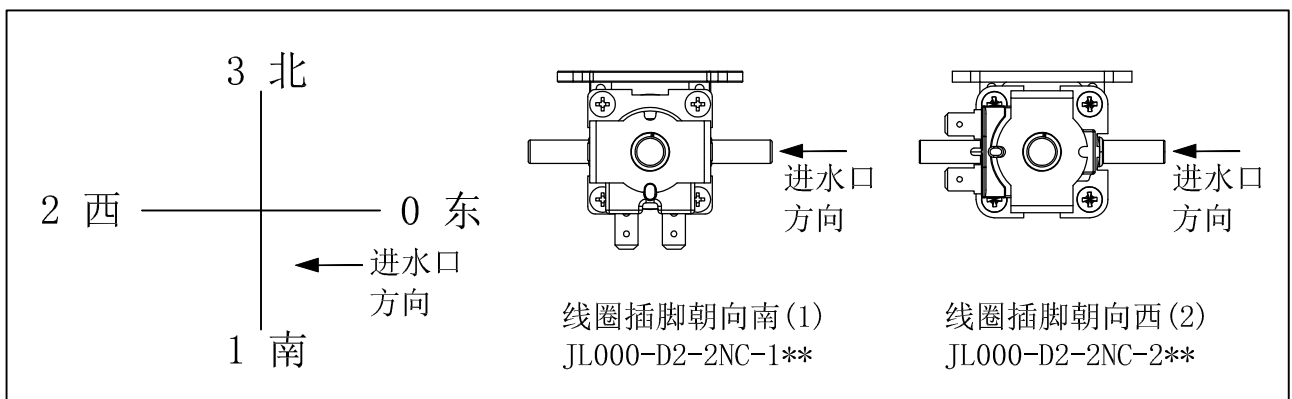


表1: 电压等级代号

代号	D1	D2	D3	D4	D5	D6	D7	D8	D9
DC	12V	24V	48V	110V	220V	6V	9V	其他	
代号	A1	A2	A3	A4	A5	A6	A7	A8	A9
AC	12V	24V	48V	110V	220V	其他			

表2: 线圈插脚方向: 0、1、2、3



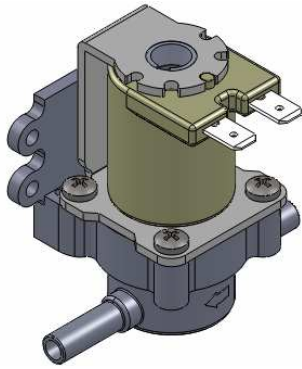
例如: JL000-D2-2NC-1\*\*

表示: JL序列编号为000, 电压DC 24V, 两通常闭阀, 线圈插脚朝南(1)



# JL系列电磁阀

## JL series solenoid valve



JL000系列电磁阀  
JL000 Solenoid Valva

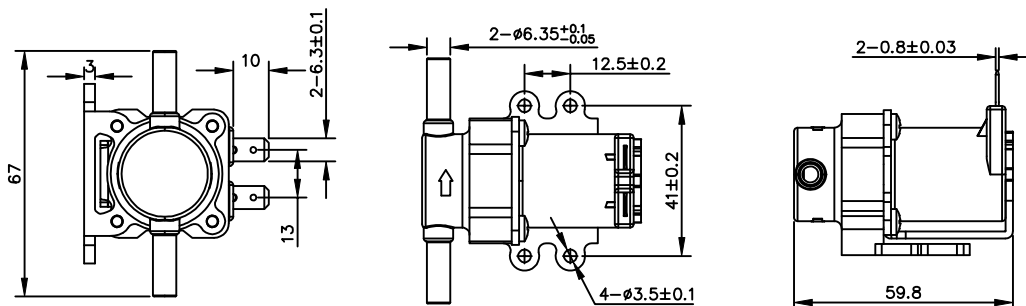
用途 (USE):

净水设备 (Water purifier);  
锅炉 (Boiler);  
洗衣机 (Washing machine);  
浴缸 (Bidet)

### 技术性能参数SPECIFICATION

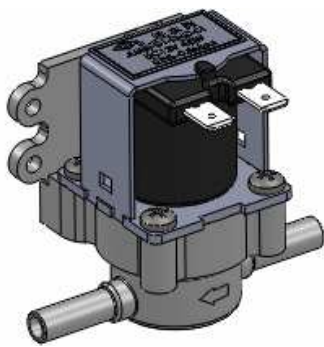
动作原理 (Principle)	直动式, 先导式 (Straight type, Pilot type)
电压 (Rating voltage)	12VDC, 24VDC, 110VAC/50HZ, 200-240VAC/50HZ
类型 (Type)	常闭 (Normal close)
使用介质 (Medium)	(未结冰) 自来水; 地下水 (Liquid water); (Underground water)
使用压力 (Pressure range)	0.02-0.8MPa (0.2-8bar) / 0.02-1.0MPa (0.2-10bar) (可定制Customizable)
使用环境温度 (Ambient Temp.)	-25~55℃
最大介质温度 (Max. medium Temp.)	90℃
绝缘等级 (Insulation class)	Class "B" (130℃) / "F" (155℃) / "H" (180℃)
工作周期 (Duty cycle)	100% at 25℃ (for medium Temp.); Intermittent operation at 90℃ (for medium Temp.)
环保/卫生级别 (ROHS/Sanitation grade)	整体符合ROHS, 接触介质部分材料符合FDA及饮用水卫生安全 (Comply with ROHS. According to FDA & drinking water quality for The material of touching the medium)
管道连接方式 (Port size/amounting)	1/4"管 (可用1/4" 快插式接头连接) G1/4 solenoid connector (G1/4 fast insert series)
安装固定方式 (Installation type)	可以利用背面板之4个孔用螺钉固定 Use screw to fix the 4 holes on the back panel
其余 (Other)	客户要求 (Customizable)

### 外形尺寸DIMENSIONS (mm)





# JL系列电磁阀 JL series solenoid valve



JL000系列电磁阀  
JL000 Solenoid Valva

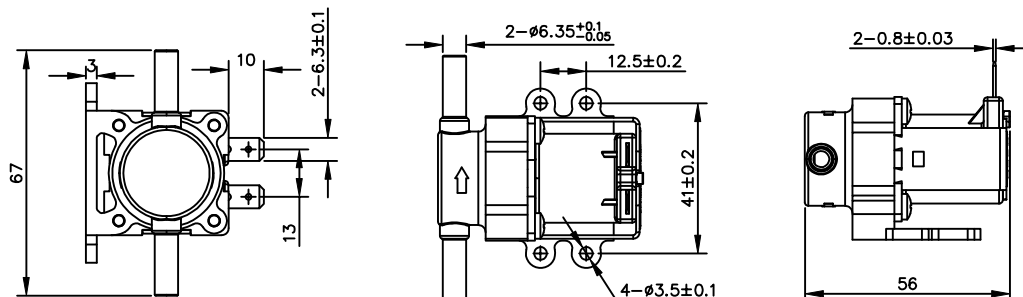
用途 (USE):

净水设备 (Water purifier);  
锅炉 (Boiler);  
洗衣机 (Washing machine);  
浴缸 (Bidet)

## 技术性能参数SPECIFICATION

动作原理 (Principle)	直动式, 先导式 (Straight type, Pilot type)
电压 (Rating voltage)	12VDC, 24VDC, 110VAC/50HZ, 200-240VAC/50HZ
类型 (Type)	常闭 (Normal close)
使用介质 (Medium)	(未结冰) 自来水; 地下水 (Liquid water); (Underground water)
使用压力 (Pressure range)	0.02-0.8MPa (0.2-8bar) / 0.02-1.0MPa (0.2-10bar) (可定制Customizable)
使用环境温度 (Ambient Temp.)	-25~55℃
最大介质温度 (Max. medium Temp.)	90℃
绝缘等级 (Insulation class)	Class "B" (130℃) / "F" (155℃) / "H" (180℃)
工作周期 (Duty cycle)	100% at 25℃ (for medium Temp.); Intermittent operation at 90℃ (for medium Temp.)
环保/卫生级别 (ROHS/Sanitation grade)	整体符合ROHS, 接触介质部分材料符合FDA及饮用水卫生安全 (Comply with ROHS. According to FDA & drinking water quality for The material of touching the medium)
管道连接方式 (Port size/amounting)	1/4"管 (可用1/4" 快插式接头连接) G1/4 solenoid connector (G1/4 fast insert series)
安装固定方式 (Installation type)	可以利用背面板之4个孔用螺钉固定 Use screw to fix the 4 holes on the back panel
其余 (Other)	客户要求 (Customizable)

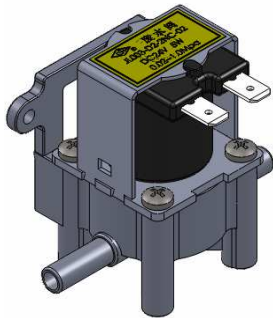
## 外形尺寸DIMENSIONS (mm)





# JL系列电磁阀

## JL series solenoid valve



JL000系列带废水比电磁阀  
JL000 Wastewater Valve

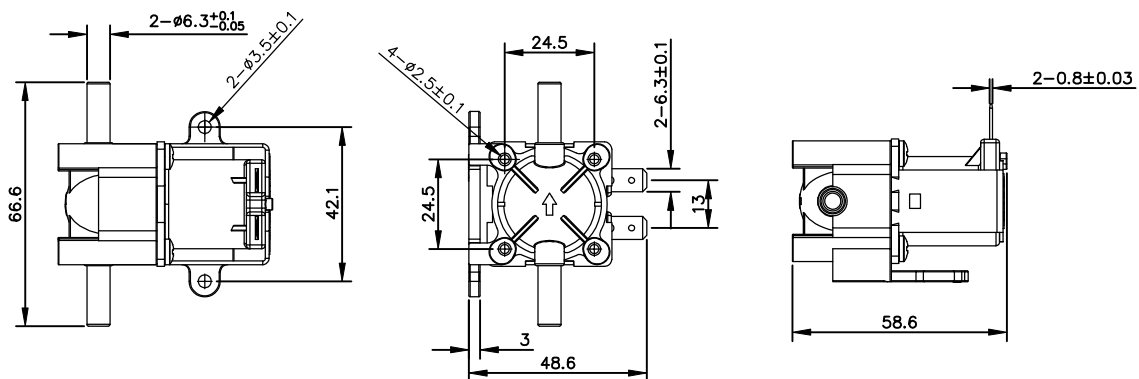
用途 (USE):

净水设备 (Water purifier)

### 技术性能参数SPECIFICATION

动作原理 (Principle)	直动式, 先导式 (Straight type, Pilot type)
电压 (Rating voltage)	12VDC, 24VDC, 110VAC/50HZ, 200-240VAC/50HZ
类型 (Type)	常闭 (Normal close)
废水流量 (Wastewater flow)	420±42ml/Min. (无电压输入, 在0.42Mpa水压下, ) (其它可定制) 420±42ml/Min. (Base on no voltage input and hydraulic pressure 0.42Mpa) (Customizable)
使用介质 (Medium)	(未结冰) 自来水; 地下水 (Liquid water); (Underground water)
使用压力 (Pressure range)	0.02-0.8MPa (0.2-8bar) / 0.02-1.0MPa (0.2-10bar) (可定制 Customizable)
使用环境温度 (Ambient Temp.)	-25~55℃
最大介质温度 (Max. medium Temp.)	90℃
绝缘等级 (Insulation class)	Class "B" (130℃) / "F" (155℃) / "H" (180℃)
工作周期 (Duty cycle)	100% at 25℃ (for medium Temp); Intermittent operation at 90℃ (for medium Temp.)
环保/卫生级别 (ROHS/Sanitation grade)	整体符合ROHS, 接触介质部分材料符合FDA及饮用水卫生安全 (Comply with ROHS. According to FDA & drinking water quality for The material of touching the medium)
管道连接方式 (Port size/amounting)	1/4"管 (可用1/4" 快插式接头连接) G1/4 solenoid connector (G1/4 fast insert series)
安装固定方式 (Installation type)	可以利用背面板之2个孔或则顶部4个孔用螺钉固定 Use screw to fix the 2 holes on the back panel or 4 holes on the top panel
其余 (Other)	客户要求 (Customizable)

### 外形尺寸DIMENSIONS (mm)



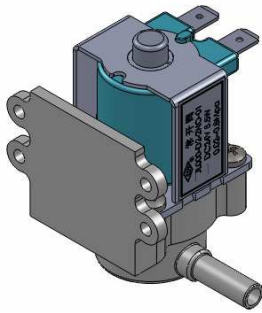


# JL系列电磁阀 JL series solenoid valve

JL000系列 常开电磁阀  
JL000 Normal Open Valve

用途 (USE):

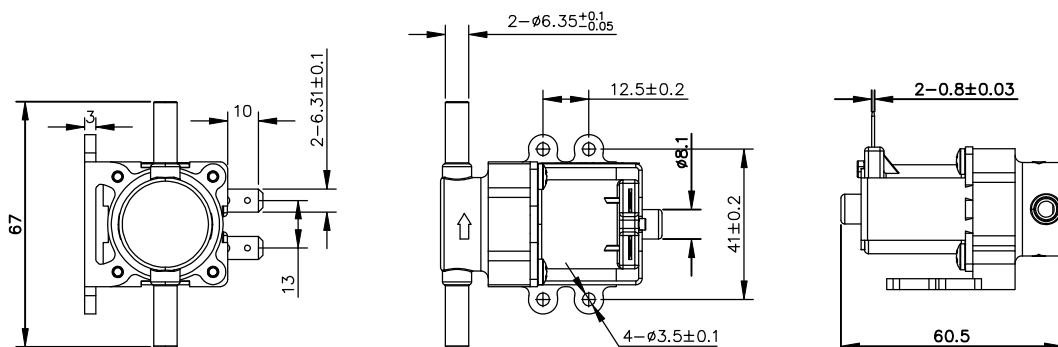
净水设备 (Water purifier);



## 技术性能参数SPECIFICATION

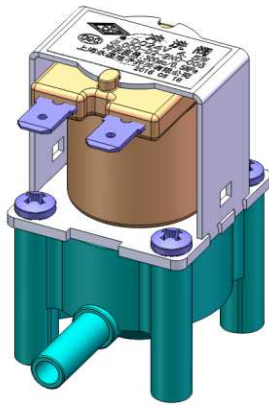
动作原理 (Principle)	先导式 Pilot type
电压 (Rating voltage)	12VDC, 24VDC, 110VAC/50HZ, 200-240VAC/50HZ
类型 (Type)	常开 (Normal Open)
使用介质 (Medium)	(未结冰) 自来水; 地下水 (Liquid water); (Underground water)
使用压力 (Pressure range)	0.02-0.8MPa (0.2-8bar)
使用环境温度 (Ambient Temp.)	-25~55℃
最大介质温度 (Max. medium Temp.)	90℃
绝缘等级 (Insulation class)	Class "B" (130℃) / "F" (155℃) / "H" (180℃)
工作周期 (Duty cycle)	100% at 25℃ (for medium Temp.); Intermittent operation at 90℃ (for medium Temp.)
环保/卫生级别 (ROHS/Sanitation grade)	整体符合ROHS, 接触介质部分材料符合FDA及饮用水卫生安全 (Comply with ROHS. According to FDA & drinking water quality for The material of touching the medium)
管道连接方式 Port size/amounting)	1/4"管 (可用1/4" 快插式接头连接) G1/4 solenoid connector (G1/4 fast insert series)
安装固定方式 (Installation type)	可以利用背面板之4个孔用螺钉固定 Use screw to fix the 4 holes on the back panel
其余 (Other)	客户要求 (Customizable)

## 外形尺寸DIMENSIONS (mm)





# JL系列电磁阀 JL series solenoid valve



JL000系列 电磁阀  
JL000 Solenoid Valva

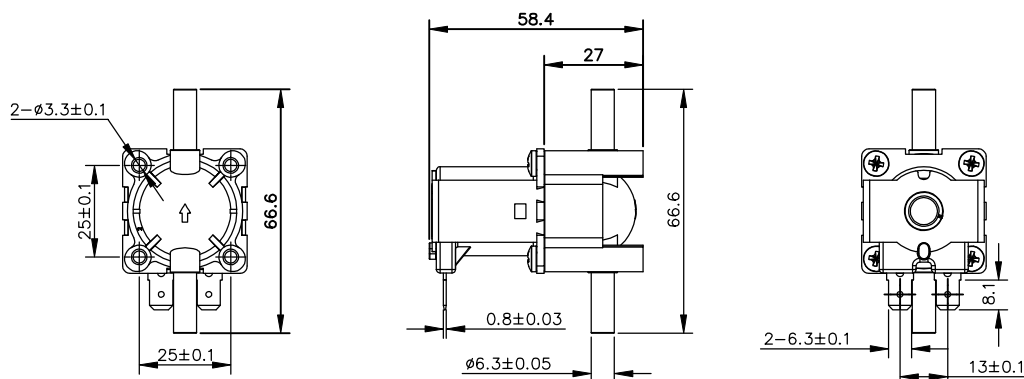
用途 (USE):

净水设备 (Water purifier);  
锅炉 (Boiler);  
洗衣机 (Washing machine);  
浴缸 (Bidet)

## 技术性能参数SPECIFICATION

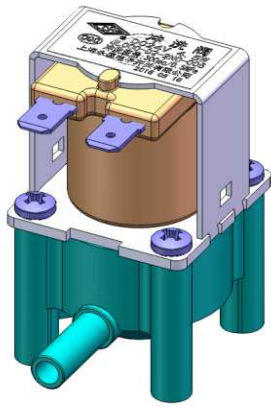
动作原理 (Principle)	直动式, 先导式 (Straight type, Pilot type)
电压 (Rating voltage)	12VDC, 24VDC, 110VAC/50HZ, 200-240VAC/50HZ
类型 (Type)	常闭 (Normal close)
使用介质 (Medium)	(未结冰) 自来水; 地下水 (Liquid water); (Underground water)
使用压力 (Pressure range)	0.02-0.8MPa (0.2-8bar) / 0.02-1.0MPa (0.2-10bar) (可定制Customizable)
使用环境温度 (Ambient Temp.)	-25~55℃
最大介质温度 (Max. medium Temp.)	90℃
绝缘等级 (Insulation class)	Class "B" (130℃) / "F" (155℃) / "H" (180℃)
工作周期 (Duty cycle)	100% at 25℃ (for medium Temp.); Intermittent operation at 90℃ (for medium Temp.)
环保/卫生级别 (ROHS/Sanitation grade)	整体符合ROHS, 接触介质部分材料符合FDA及饮用水卫生安全 (Comply with ROHS. According to FDA & drinking water quality for The material of touching the medium)
管道连接方式 (Port size/amounting)	1/4"管 (可用1/4" 快插式接头连接) G1/4 solenoid connector (G1/4 fast insert series)
安装固定方式 (Installation type)	可以利用顶部4个孔用螺钉固定 Use screw to fix the 4 holes on the top panel
其余 (Other)	客户要求 (Customizable)

## 外形尺寸DIMENSIONS (mm)





# JL系列电磁阀 JL series solenoid valve



JL000系列 带废水比电磁阀  
JL000 Wastewater Valve

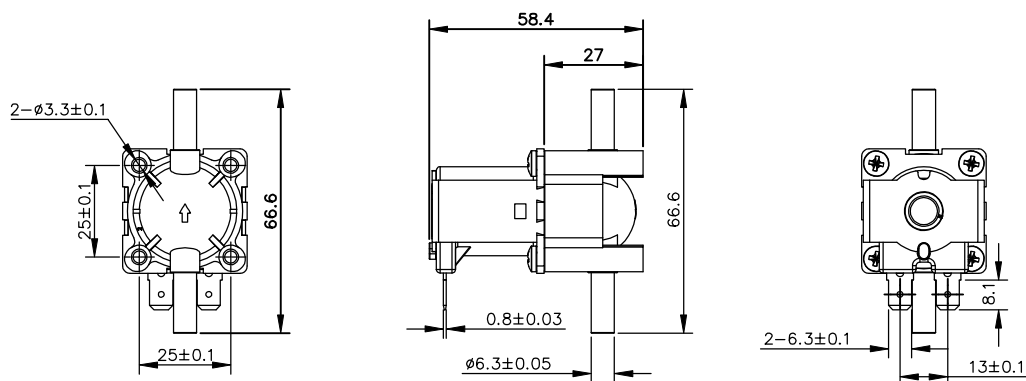
用途 (USE):

净水设备 (Water purifier)

## 技术性能参数SPECIFICATION

动作原理 (Principle)	直动式, 先导式 (Straight type, Pilot type)
电压 (Rating voltage)	12VDC, 24VDC, 110VAC/50HZ, 200-240VAC/50HZ
类型 (Type)	常闭 (Normal close)
废水流量 (Wastewater flow)	420±42ml/Min. (无电压输入, 在0.42Mpa水压下, ) (其它可定制) 420±42ml/Min. (Base on no voltage input and hydraulic pressure 0.42Mpa) (Customizable)
使用介质 (Medium)	(未结冰) 自来水; 地下水 (Liquid water); (Underground water)
使用压力 (Pressure range)	0.02-0.8MPa (0.2-8bar) / 0.02-1.0MPa (0.2-10bar) (可定制 Customizable)
使用环境温度 (Ambient Temp.)	-25~55℃
最大介质温度 (Max. medium Temp.)	90℃
绝缘等级 (Insulation class)	Class "B" (130℃) / "F" (155℃) / "H" (180℃)
工作周期 (Duty cycle)	100% at 25℃ (for medium Temp); Intermittent operation at 90℃ (for medium Temp.)
环保/卫生级别 (ROHS/Sanitation grade)	整体符合ROHS, 接触介质部分材料符合FDA及饮用水卫生安全 (Comply with ROHS. According to FDA & drinking water quality for The material of touching the medium)
管道连接方式 (Port size/amounting)	1/4"管 (可用1/4" 快插式接头连接) G1/4 solenoid connector (G1/4 fast insert series)
安装固定方式 (Installation type)	可以利用顶部4个孔用螺钉固定 Use screw to fix the 4 holes on the top panel
其余 (Other)	客户要求 (Customizable)

## 外形尺寸DIMENSIONS (mm)

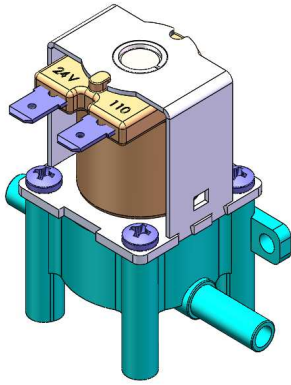






# JL系列电磁阀

## JL series solenoid valve



JL000系列 电磁阀  
JL000 Solenoid Valva

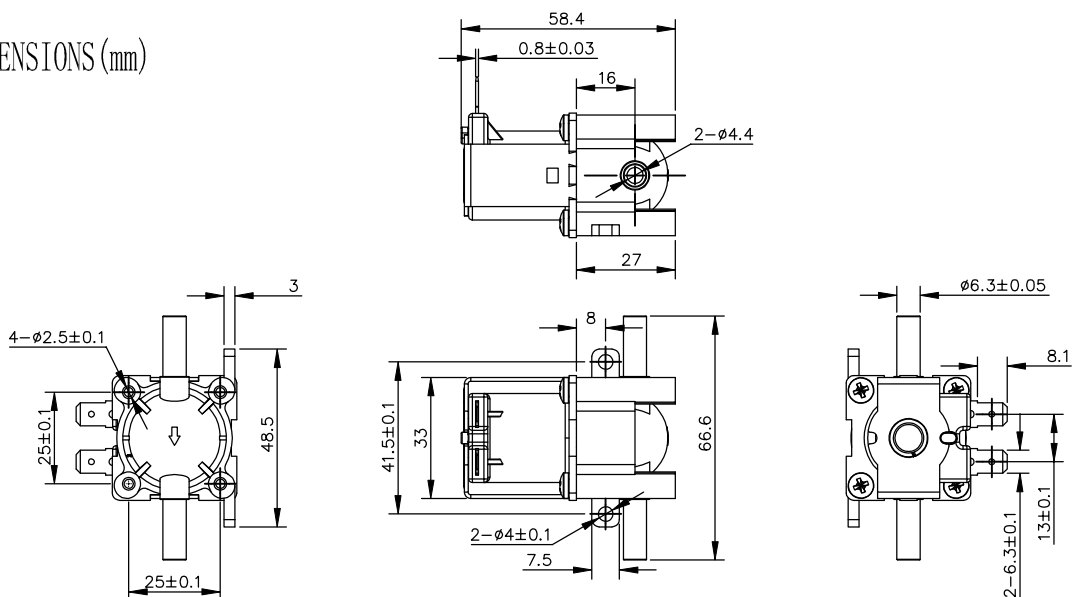
用途 (USE):

净水设备 (Water purifier);  
锅炉 (Boiler);  
洗衣机 (Washing machine);  
浴缸 (Bidet)

### 技术性能参数SPECIFICATION

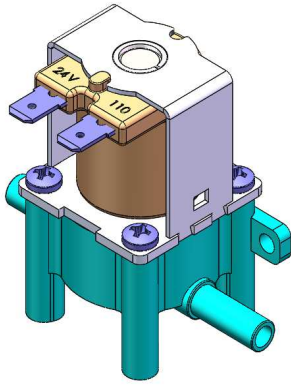
动作原理 (Principle)	直动式, 先导式 (Straight type, Pilot type)
电压 (Rating voltage)	12VDC, 24VDC, 110VAC/50HZ, 200-240VAC/50HZ
类型 (Type)	常闭 (Normal close)
使用介质 (Medium)	(未结冰) 自来水; 地下水 (Liquid water); (Underground water)
使用压力 (Pressure range)	0.02-0.8MPa (0.2-8bar) / 0.02-1.0MPa (0.2-10bar) (可定制Customizable)
使用环境温度 (Ambient Temp.)	-25~55℃
最大介质温度 (Max. medium Temp.)	90℃
绝缘等级 (Insulation class)	Class "B" (130℃) / "F" (155℃) / "H" (180℃)
工作周期 (Duty cycle)	100% at 25℃ (for medium Temp.); Intermittent operation at 90℃ (for medium Temp.)
环保/卫生级别 (ROHS/Sanitation grade)	整体符合ROHS, 接触介质部分材料符合FDA及饮用水卫生安全 (Comply with ROHS. According to FDA & drinking water quality for The material of touching the medium)
管道连接方式 (Port size/amounting)	1/4"管 (可用1/4" 快插式接头连接) G1/4 solenoid connector (G1/4 fast insert series)
安装固定方式 (Installation type)	可以利用背面板之2个孔或则顶部4个孔用螺钉固定 Use screw to fix the 2 holes on the back panel or 4 holes on the top panel
其余 (Other)	客户要求 (Customizable)

### 外形尺寸DIMENSIONS (mm)





# JL系列电磁阀 JL series solenoid valve



JL000系列 带废水比电磁阀  
JL000 Wastewater Valve

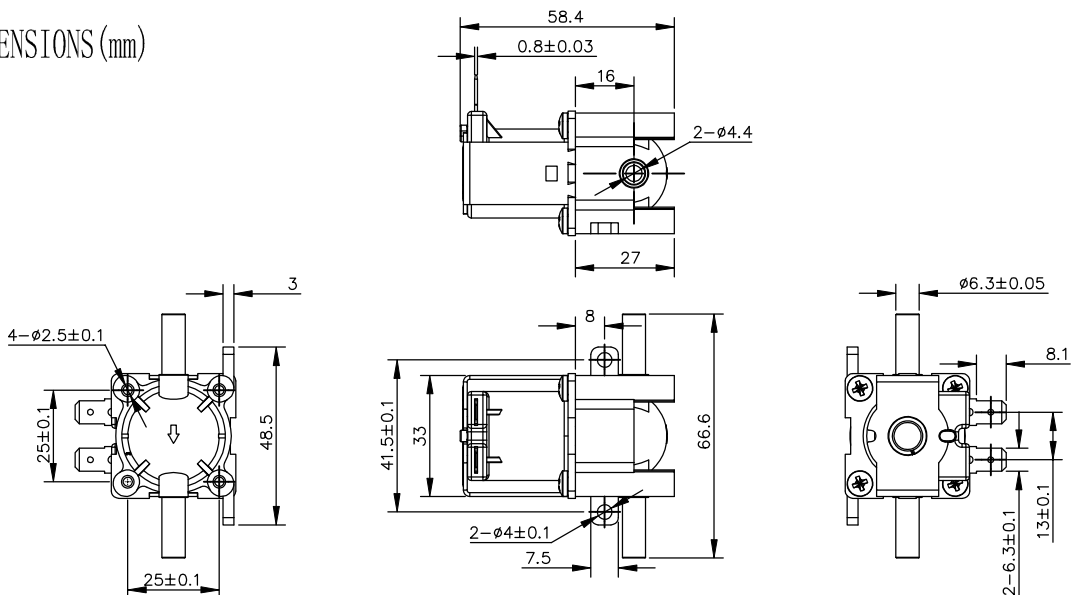
用途 (USE):

净水设备 (Water purifier)

## 技术性能参数SPECIFICATION

动作原理 (Principle)	直动式, 先导式 (Straight type, Pilot type)
电压 (Rating voltage)	12VDC, 24VDC, 110VAC/50HZ, 200-240VAC/50HZ
类型 (Type)	常闭 (Normal close)
废水流量 (Wastewater flow)	420±42ml/Min. (无电压输入, 在0.42Mpa水压下, ) (其它可定制) 420±42ml/Min. (Base on no voltage input and hydraulic pressure 0.42Mpa) (Customizable)
使用介质 (Medium)	(未结冰) 自来水; 地下水 (Liquid water); (Underground water)
使用压力 (Pressure range)	0.02-0.8MPa (0.2-8bar) / 0.02-1.0MPa (0.2-10bar) (可定制 Customizable)
使用环境温度 (Ambient Temp.)	-25~55℃
最大介质温度 (Max. medium Temp.)	90℃
绝缘等级 (Insulation class)	Class "B" (130℃) / "F" (155℃) / "H" (180℃)
工作周期 (Duty cycle)	100% at 25℃ (for medium Temp); Intermittent operation at 90℃ (for medium Temp.)
环保/卫生级别 (ROHS/Sanitation grade)	整体符合ROHS, 接触介质部分材料符合FDA及饮用水卫生安全 (Comply with ROHS. According to FDA & drinking water quality for The material of touching the medium)
管道连接方式 (Port size/amounting)	1/4"管 (可用1/4" 快插式接头连接) G1/4 solenoid connector (G1/4 fast insert series)
安装固定方式 (Installation type)	可以利用背面板之2个孔或则顶部4个孔用螺钉固定 Use screw to fix the 2 holes on the back panel or 4 holes on the top panel
其余 (Other)	客户要求 (Customizable)

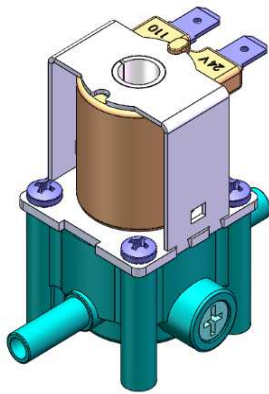
## 外形尺寸DIMENSIONS (mm)





# JL系列电磁阀

## JL series solenoid valve



JL000系列 带废水比低噪音电磁阀

JL000 Wastewater Valve

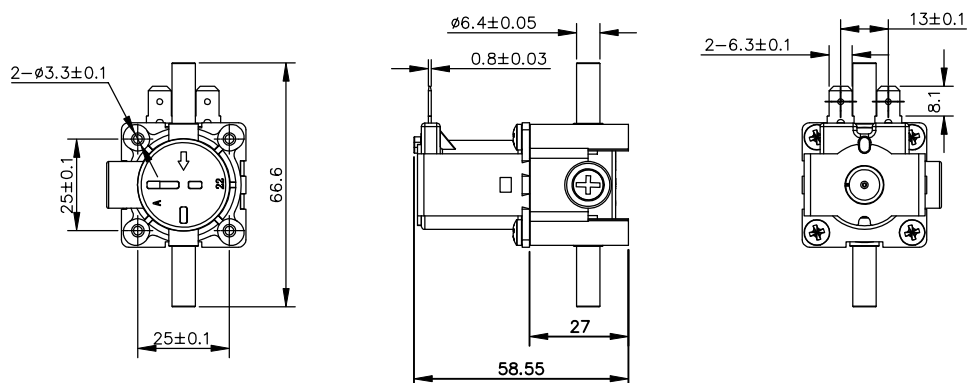
用途 (USE):

净水设备 (Water purifier)

### 技术性能参数SPECIFICATION

动作原理 (Principle)	直动式, 先导式 (Straight type, Pilot type)
电压 (Rating voltage)	12VDC, 24VDC, 110VAC/50HZ, 200-240VAC/50HZ
类型 (Type)	常闭 (Normal close)
废水流量 (Wastewater flow)	420±42ml/Min. (无电压输入, 在0.42Mpa水压下, ) (其它可定制) 420±42ml/Min. (Base on no voltage input and hydraulic pressure 0.42Mpa) (Customizable)
使用介质 (Medium)	(未结冰) 自来水; 地下水 (Liquid water); (Underground water)
使用压力 (Pressure range)	0.02-0.8MPa (0.2-8bar) / 0.02-1.0MPa (0.2-10bar) (可定制 Customizable)
使用环境温度 (Ambient Temp.)	-25~55℃
最大介质温度 (Max. medium Temp.)	90℃
绝缘等级 (Insulation class)	Class "B" (130℃) / "F" (155℃) / "H" (180℃)
工作周期 (Duty cycle)	100% at 25℃ (for medium Temp); Intermittent operation at 90℃ (for medium Temp.)
环保/卫生级别 (ROHS/Sanitation grade)	整体符合ROHS, 接触介质部分材料符合FDA及饮用水卫生安全 (Comply with ROHS. According to FDA & drinking water quality for The material of touching the medium)
管道连接方式 (Port size/amounting)	1/4"管 (可用1/4" 快插式接头连接) G1/4 solenoid connector (G1/4 fast insert series)
安装固定方式 (Installation type)	可以利用顶部4个孔用螺钉固定 Use screw to fix the 4 holes on the top panel
其余 (Other)	客户要求 (Customizable)

### 外形尺寸DIMENSIONS (mm)



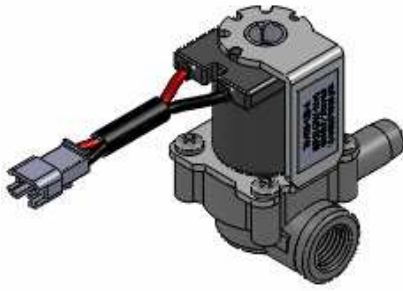


# JL系列电磁阀 JL series solenoid valve

JL002 系列电磁阀  
JL002 Valve

用途 (USE):

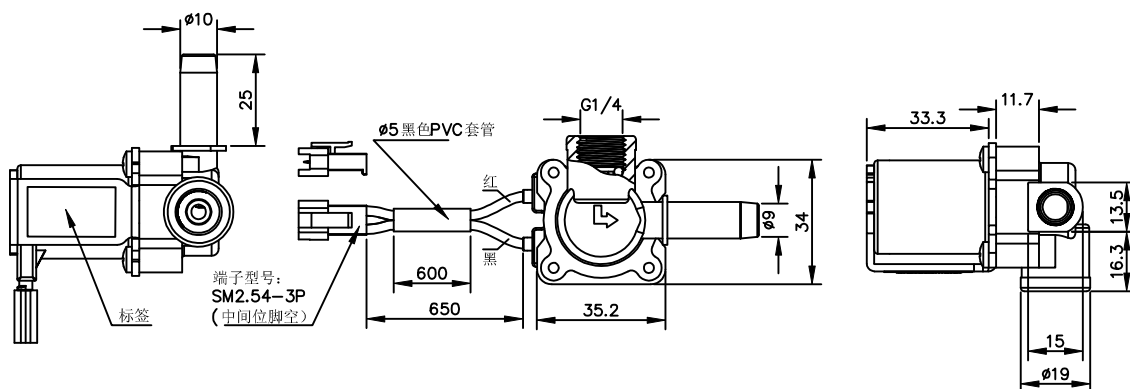
移动空调 (Air-condition);  
饮水设备 (Water purifier);  
咖啡机 (Coffee machine);  
果汁机 (Juice machine)



## 技术性能参数 SPECIFICATION

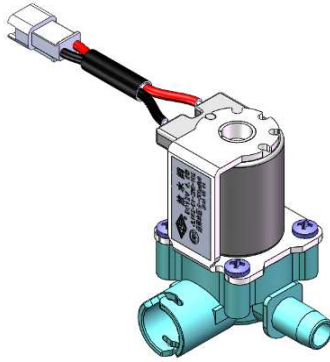
动作原理 (Principle)	直动式, 先导式 (Straight type, Pilot type)
电压 (Rating voltage)	12VDC, 24VDC, 110VAC/50HZ, 200-240VAC/50HZ
类型 (Type)	常闭 (Normal close)
使用介质 (Medium)	(未结冰) 自来水; 地下水; 饮料 (无颗粒) (Liquid water); (Underground water); (Juice)
使用压力 (Pressure range)	M. O. P. D: 1200mmH <sub>2</sub> O (0-0.012Mpa) (直动式 Straight type); 0.02-0.8MPa (0.2-8bar) (先导式 Pilot type)
使用环境温度 (Ambient Temp.)	-25~55℃
最大介质温度 (Max. medium Temp.)	60℃
绝缘等级 (Insulation class)	Class "B" (130℃) / "F" (155℃) / "H" (180℃)
工作周期 (Duty cycle)	100% at 25℃ (for medium Temp.); Intermittent operation at 60℃ (for medium Temp.)
环保/卫生级别 (ROHS/Sanitation grade)	整体符合ROHS, 接触介质部分材料符合FDA及饮用水卫生安全 (Comply with ROHS. According to FDA & drinking water quality for The material of touching the medium)
其余 (Other)	客户要求 (Customizable)

## 外形尺寸 DIMENSIONS (mm)





# JL系列电磁阀 JL series solenoid valve



JL002 系列电磁阀  
JL002 Valve

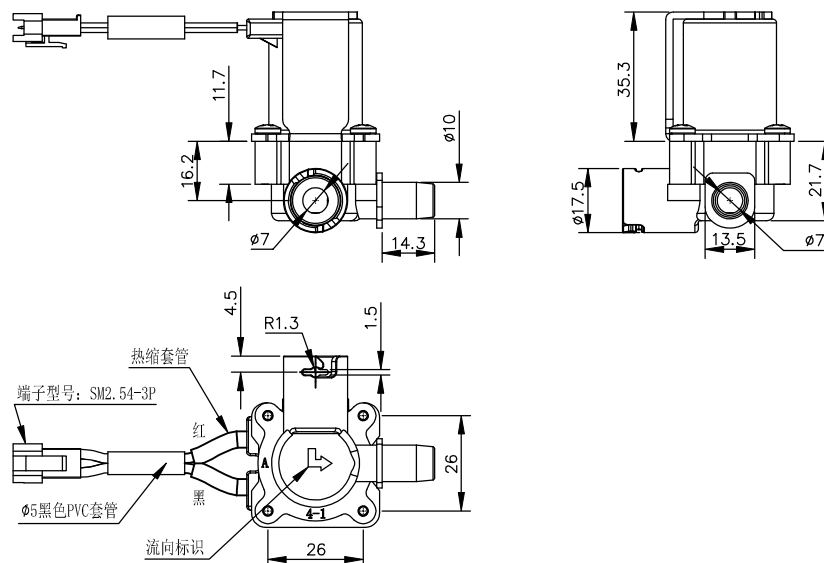
用途 (USE):

移动空调 (Air-condition);  
饮水设备 (Water purifier);  
咖啡机 (Coffee machine);  
果汁机 (Juice machine)

## 技术性能参数SPECIFICATION

动作原理 (Principle)	直动式, 先导式 (Straight type, Pilot type)
电压 (Rating voltage)	12VDC, 24VDC, 110VAC/50HZ, 200-240VAC/50HZ
类型 (Type)	常闭 (Normal close)
使用介质 (Medium)	(未结冰) 自来水; 地下水; 饮料 (无颗粒) (Liquid water); (Underground water); (Juice)
使用压力 (Pressure range)	M. O. P. D: 1200mmH2O (0-0.012Mpa) (直动式Straight type); 0.02-0.8MPa (0.2-8bar) (先导式Pilot type)
使用环境温度 (Ambient Temp.)	-25~55℃
最大介质温度 (Max. medium Temp.)	60℃
绝缘等级 (Insulation class)	Class "B" (130℃) / "F" (155℃) / "H" (180℃)
工作周期 (Duty cycle)	100% at 25℃ (for medium Temp.); Intermittent operation at 60℃ (for medium Temp.)
环保/卫生级别 (ROHS/Sanitation grade)	整体符合ROHS, 接触介质部分材料符合FDA及饮用水卫生安全 (Comply with ROHS. According to FDA & drinking water quality for The material of touching the medium)
其余 (Other)	客户要求 (Customizable)

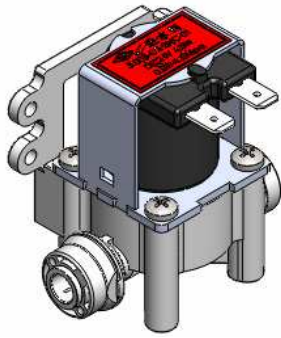
## 外形尺寸DIMENSIONS (mm)





# JL系列电磁阀

## JL series solenoid valve



JL003系列 1/4"快插式电磁阀  
JL003 Solenoid Valve

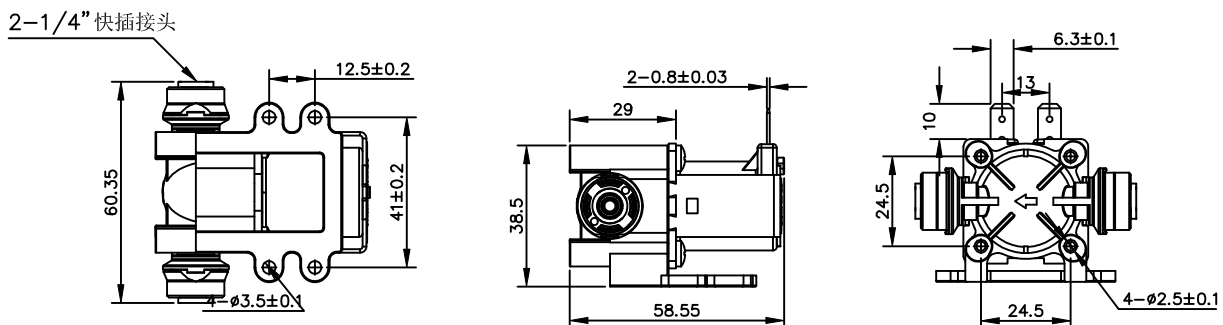
用途 (USE):

净水设备 (Water purifier);  
锅炉 (Boiler);  
洗衣机 (Washing machine);  
浴缸 (Bidet)

### 技术性能参数SPECIFICATION

动作原理 (Principle)	直动式, 先导式 (Straight type, Pilot type)
电压 (Rating voltage)	12VDC, 24VDC, 110VAC/50HZ, 200-240VAC/50HZ
类型 (Type)	常闭/常开 (Normal close/Normal Open)
使用介质 (Medium)	(未结冰) 自来水; 地下水 (Liquid water); (Underground water)
使用压力 (Pressure range)	0.02-0.8MPa (0.2-8bar) / 0.02-1.0MPa (0.2-10bar) (可定制Customizable)
使用环境温度 (Ambient Temp.)	-25~55℃
最大介质温度 (Max. medium Temp.)	90℃
绝缘等级 (Insulation class)	Class "B" (130℃) / "F" (155℃) / "H" (180℃)
工作周期 (Duty cycle)	100% at 25℃ (for medium Temp.); Intermittent operation at 90℃ (for medium Temp.)
环保/卫生级别 (ROHS/Sanitation grade)	整体符合ROHS, 接触介质部分材料符合FDA及饮用水卫生安全 (Comply with ROHS. According to FDA & drinking water quality for The material of touching the medium)
管道连接方式 (Port size/amounting)	1/4"胶管快插式 G1/4 quick connector
安装固定方式 (Installation type)	可以利用背面板之4个孔或者顶部4个孔用螺钉固定 Use screw to fix the 4 holes on the back pane or top panel.
其余 (Other)	客户要求 (Customizable)

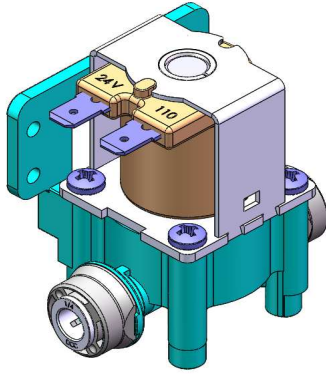
### 外形尺寸DIMENSIONS (mm)





# JL系列电磁阀

## JL series solenoid valve



JL003系列 1/4"快插式电磁阀  
JL003 Solenoid Valve

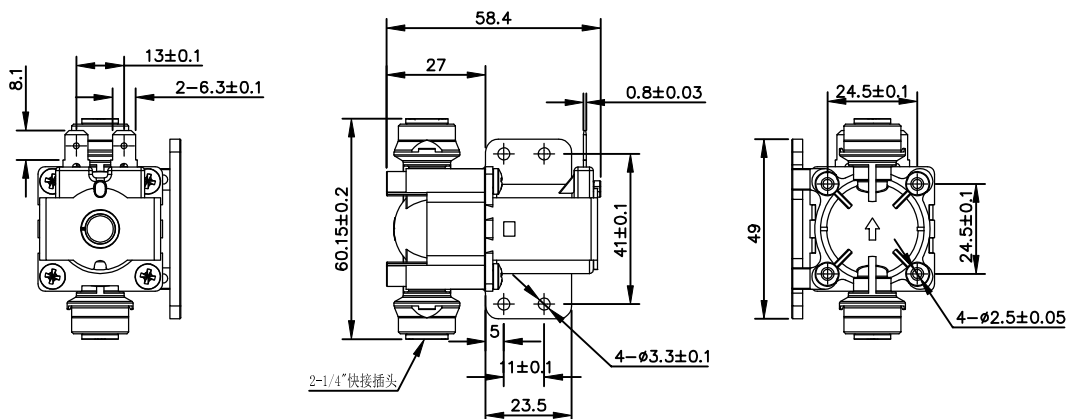
用途 (USE):

净水设备 (Water purifier);  
锅炉 (Boiler);  
洗衣机 (Washing machine);  
浴缸 (Bidet)

### 技术性能参数SPECIFICATION

动作原理 (Principle)	直动式, 先导式 (Straight type, Pilot type)
电压 (Rating voltage)	12VDC, 24VDC, 110VAC/50HZ, 200-240VAC/50HZ
类型 (Type)	常闭/常开 (Normal close/Normal Open)
使用介质 (Medium)	(未结冰) 自来水; 地下水 (Liquid water); (Underground water)
使用压力 (Pressure range)	0.02-0.8MPa (0.2-8bar) / 0.02-1.0MPa (0.2-10bar) (可定制 Customizable)
使用环境温度 (Ambient Temp.)	-25~55℃
最大介质温度 (Max. medium Temp.)	90℃
绝缘等级 (Insulation class)	Class "B" (130℃) / "F" (155℃) / "H" (180℃)
工作周期 (Duty cycle)	100% at 25℃ (for medium Temp.); Intermittent operation at 90℃ (for medium Temp.)
环保/卫生级别 (ROHS/Sanitation grade)	整体符合ROHS, 接触介质部分材料符合FDA及饮用水卫生安全 (Comply with ROHS. According to FDA & drinking water quality for The material of touching the medium)
管道连接方式 (Port size/amounting)	1/4"胶管快插式 G1/4 quick connector
安装固定方式 (Installation type)	可以利用背面板之4个孔或者顶部4个孔用螺钉固定 Use screw to fix the 4 holes on the back pane or top panel.
其余 (Other)	客户要求 (Customizable)

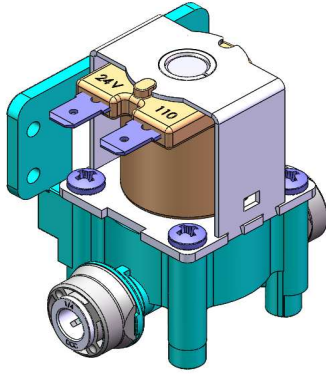
### 外形尺寸DIMENSIONS (mm)





# JL系列电磁阀

## JL series solenoid valve



JL003系列 1/4"快插式电磁阀  
JL003 Solenoid Valve

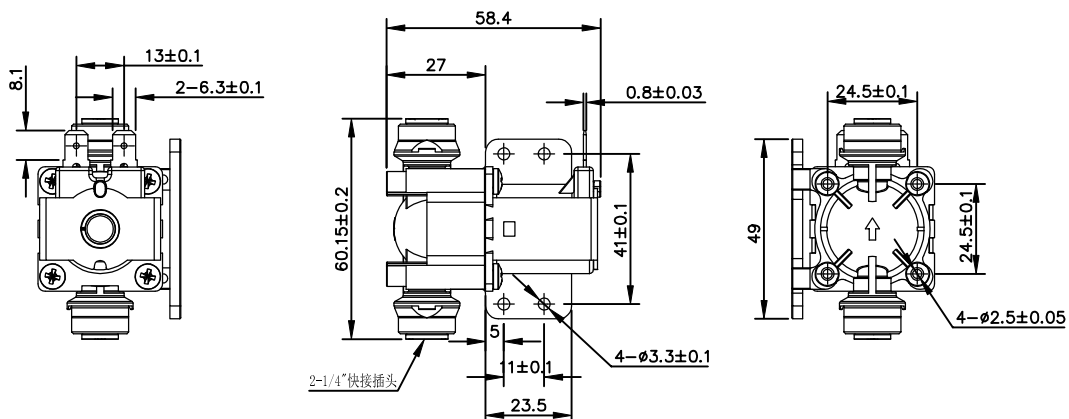
用途 (USE):

净水设备 (Water purifier);  
锅炉 (Boiler);  
洗衣机 (Washing machine);  
浴缸 (Bidet)

### 技术性能参数SPECIFICATION

动作原理 (Principle)	直动式, 先导式 (Straight type, Pilot type)
电压 (Rating voltage)	12VDC, 24VDC, 110VAC/50HZ, 200-240VAC/50HZ
类型 (Type)	常闭/常开 (Normal close/Normal Open)
使用介质 (Medium)	(未结冰) 自来水; 地下水 (Liquid water); (Underground water)
使用压力 (Pressure range)	0.02-0.8MPa (0.2-8bar) / 0.02-1.0MPa (0.2-10bar) (可定制Customizable)
使用环境温度 (Ambient Temp.)	-25~55℃
最大介质温度 (Max. medium Temp.)	90℃
绝缘等级 (Insulation class)	Class "B" (130℃) / "F" (155℃) / "H" (180℃)
工作周期 (Duty cycle)	100% at 25℃ (for medium Temp.); Intermittent operation at 90℃ (for medium Temp.)
环保/卫生级别 (ROHS/Sanitation grade)	整体符合ROHS, 接触介质部分材料符合FDA及饮用水卫生安全 (Comply with ROHS. According to FDA & drinking water quality for The material of touching the medium)
管道连接方式 (Port size/amounting)	1/4"胶管快插式 G1/4 quick connector
安装固定方式 (Installation type)	可以利用背面板之4个孔或者顶部4个孔用螺钉固定 Use screw to fix the 4 holes on the back pane or top panel.
其余 (Other)	客户要求 (Customizable)

### 外形尺寸DIMENSIONS (mm)

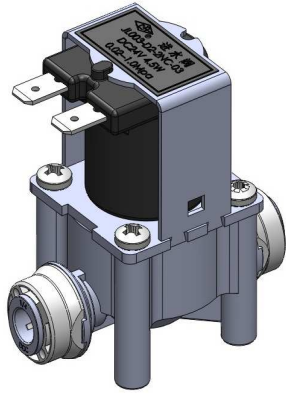






# JL系列电磁阀

## JL series solenoid valve



JL003系列 1/4"快插式电磁阀  
JL003 Solenoid Valve

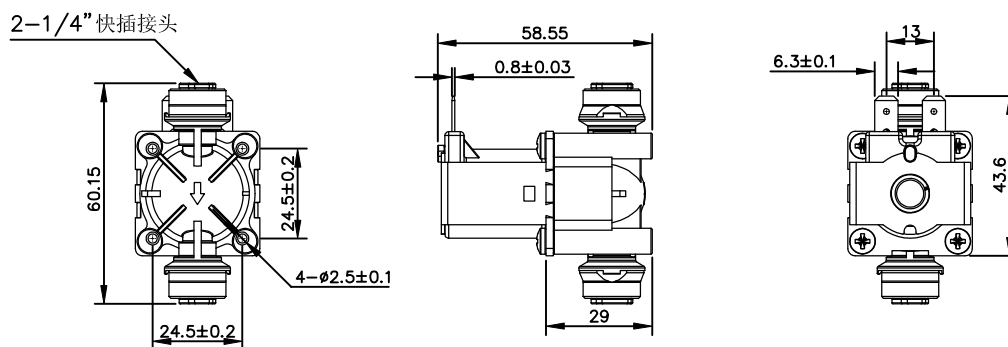
用途 (USE):

净水设备 (Water purifier);  
锅炉 (Boiler);  
洗衣机 (Washing machine);  
浴缸 (Bidet)

### 技术性能参数SPECIFICATION

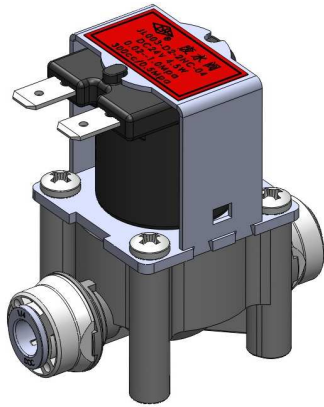
动作原理 (Principle)	直动式, 先导式 (Straight type, Pilot type)
电压 (Rating voltage)	12VDC, 24VDC, 110VAC/50HZ, 200-240VAC/50HZ
类型 (Type)	常闭 (Normal close)
使用介质 (Medium)	(未结冰) 自来水; 地下水 (Liquid water); (Underground water)
使用压力 (Pressure range)	0.02-0.8MPa (0.2-8bar) / 0.02-1.0MPa (0.2-10bar) (可定制 Customizable)
使用环境温度 (Ambient Temp.)	-25~55℃
最大介质温度 (Max. medium Temp.)	90℃
绝缘等级 (Insulation class)	Class "B" (130℃) / "F" (155℃) / "H" (180℃)
工作周期 (Duty cycle)	100% at 25℃ (for medium Temp.); Intermittent operation at 90℃ (for medium Temp.)
环保/卫生级别 (ROHS/Sanitation grade)	整体符合ROHS, 接触介质部分材料符合FDA及饮用水卫生安全 (Comply with ROHS. According to FDA & drinking water quality for The material of touching the medium)
管道连接方式 (Port size/amounting)	1/4"胶管快插式 G1/4 quick connector
安装固定方式 (Installation type)	可以利用顶部4个孔用螺钉固定 Use screw to fix the 4 holes on the top panel
其余 (Other)	客户要求 (Customizable)

### 外形尺寸DIMENSIONS (mm)





# JL系列电磁阀 JL series solenoid valve



JL003系列 1/4" 快插式带废水比电磁阀  
JL003 Wastewater Valve

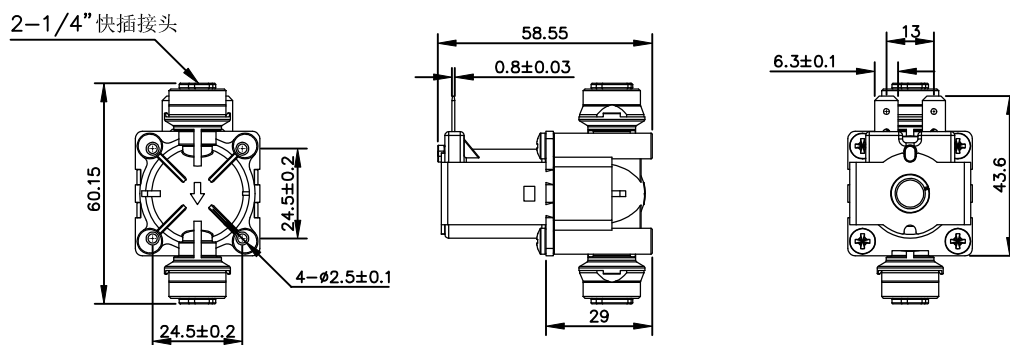
用途 (USE):

净水设备 (Water purifier)

## 技术性能参数SPECIFICATION

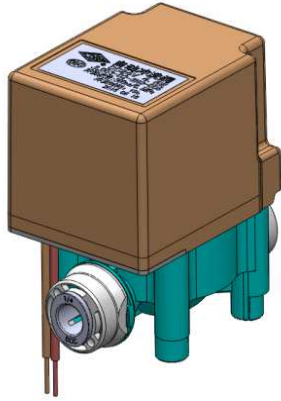
动作原理 (Principle)	直动式, 先导式 (Straight type, Pilot type)
电压 (Rating voltage)	12VDC, 24VDC, 110VAC/50HZ, 200-240VAC/50HZ
类型 (Type)	常闭 (Normal close)
废水流量 (Wastewater flow)	420±42ml/Min. (无电压输入, 在0.42Mpa水压下, ) (其它可定制) 420±42ml/Min. (Base on no voltage input and hydraulic pressure 0.42Mpa) (Customizable)
使用介质 (Medium)	(未结冰) 自来水; 地下水 (Liquid water); (Underground water)
使用压力 (Pressure range)	0.02-0.8MPa (0.2-8bar)/0.02-1.0MPa (0.2-10bar) (可定制Customizable)
使用环境温度 (Ambient Temp.)	-25~55℃
最大介质温度 (Max. medium Temp.)	90℃
绝缘等级 (Insulation class)	Class "B" (130℃) / "F" (155℃) / "H" (180℃)
工作周期 (Duty cycle)	100% at 25℃ (for medium Temp.); Intermittent operation at 90℃ (for medium Temp.)
环保/卫生级别 (ROHS/Sanitation grade)	整体符合ROHS, 接触介质部分材料符合FDA及饮用水卫生安全 (Comply with ROHS. According to FDA & drinking water quality for The material of touching the medium)
管道连接方式 (Port size/amounting)	1/4" 胶管快插式 G1/4 quick connector
安装固定方式 (Installation type)	可以利用顶部4个孔用螺钉固定 Use screw to fix the 4 holes on the top panel
其余 (Other)	客户要求 (Customizable)

## 外形尺寸DIMENSIONS (mm)





# JL系列电磁阀 JL series solenoid valve



JL003系列 1/4" 快插式带废水比自动冲洗电磁阀  
JL003 Wastewater Valve

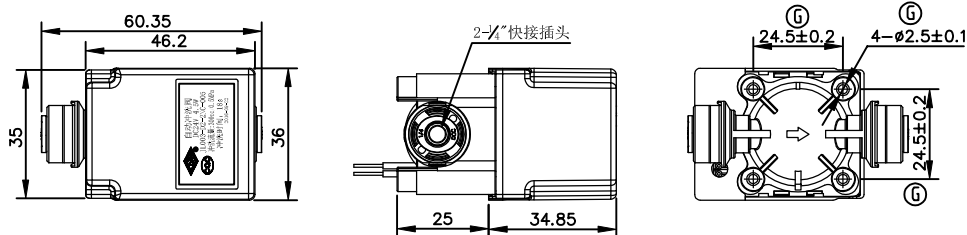
用途 (USE):

净水设备 (Water purifier)

## 技术性能参数SPECIFICATION

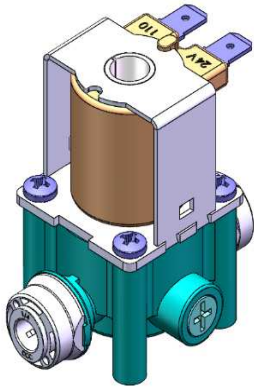
动作原理 (Principle)	直动式, 先导式 (Straight type, Pilot type)
电压 (Rating voltage)	12VDC, 24VDC, 110VAC/50HZ, 200-240VAC/50HZ
类型 (Type)	常闭 (Normal close)
废水流量 (Wastewater flow)	420±42ml/Min. (无电压输入, 在0.42Mpa水压下, ) (其它可定制) 420±42ml/Min. (Base on no voltage input and hydraulic pressure 0.42Mpa) (Customizable)
使用介质 (Medium)	(未结冰) 自来水; 地下水 (Liquid water); (Underground water)
使用压力 (Pressure range)	0.02-0.8MPa (0.2-8bar) / 0.02-1.0MPa (0.2-10bar) (可定制 Customizable)
使用环境温度 (Ambient Temp.)	-25~55℃
最大介质温度 (Max. medium Temp.)	90℃
绝缘等级 (Insulation class)	Class "B" (130℃) / "F" (155℃) / "H" (180℃)
工作周期 (Duty cycle)	100% at 25℃ (for medium Temp.); Intermittent operation at 90℃ (for medium Temp.)
环保/卫生级别 (ROHS/Sanitation grade)	整体符合ROHS, 接触介质部分材料符合FDA及饮用水卫生安全 (Comply with ROHS. According to FDA & drinking water quality for The material of touching the medium)
管道连接方式 (Port size/amounting)	1/4" 胶管快插式 G1/4 quick connector
安装固定方式 (Installation type)	可以利用顶部4个孔用螺钉固定 Use screw to fix the 4 holes on the top panel
其余 (Other)	客户要求 (Customizable)

## 外形尺寸DIMENSIONS (mm)





# JL系列电磁阀 JL series solenoid valve



JL003系列 1/4"快插式带废水比低噪音电磁阀  
JL003 Wastewater Valve

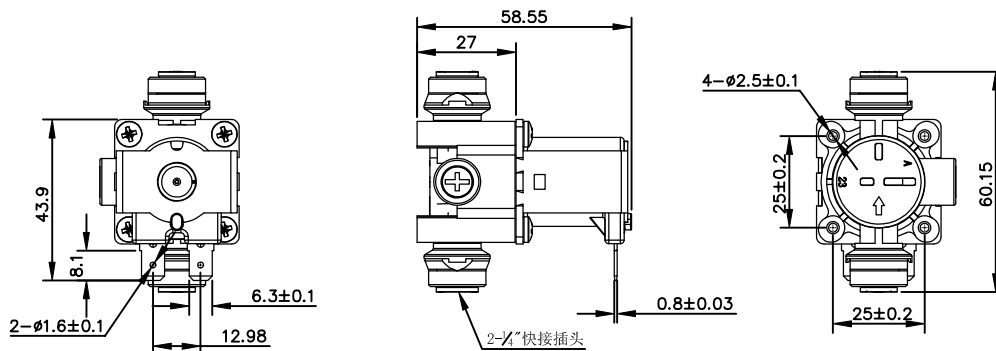
用途 (USE):

净水设备 (Water purifier)

## 技术性能参数SPECIFICATION

动作原理 (Principle)	直动式, 先导式 (Straight type, Pilot type)
电压 (Rating voltage)	12VDC, 24VDC, 110VAC/50HZ, 200-240VAC/50HZ
类型 (Type)	常闭 (Normal close)
废水流量 (Wastewater flow)	420±42ml/Min. (无电压输入, 在0.42Mpa水压下, ) (其它可定制) 420±42ml/Min. (Base on no voltage input and hydraulic pressure 0.42Mpa) (Customizable)
使用介质 (Medium)	(未结冰) 自来水; 地下水 (Liquid water); (Underground water)
使用压力 (Pressure range)	0.02-0.8MPa (0.2-8bar)/0.02-1.0MPa (0.2-10bar) (可定制Customizable)
使用环境温度 (Ambient Temp.)	-25~55℃
最大介质温度 (Max. medium Temp.)	90℃
绝缘等级 (Insulation class)	Class "B" (130℃) / "F" (155℃) / "H" (180℃)
工作周期 (Duty cycle)	100% at 25℃ (for medium Temp.); Intermittent operation at 90℃ (for medium Temp.)
环保/卫生级别 (ROHS/Sanitation grade)	整体符合ROHS, 接触介质部分材料符合FDA及饮用水卫生安全 (Comply with ROHS. According to FDA & drinking water quality for The material of touching the medium)
管道连接方式 (Port size/amounting)	1/4"胶管快插式 G1/4 quick connector
安装固定方式 (Installation type)	可以利用顶部4个孔用螺钉固定 Use screw to fix the 4 holes on the top panel
其余 (Other)	客户要求 (Customizable)

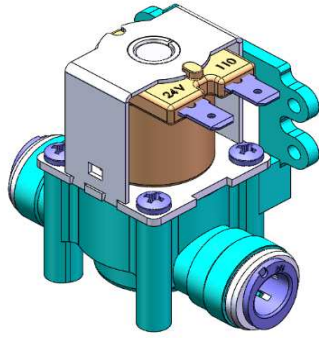
## 外形尺寸DIMENSIONS (mm)





# JL系列电磁阀

## JL series solenoid valve



JL003系列 3/8"快插式电磁阀  
JL003 Solenoid Valve

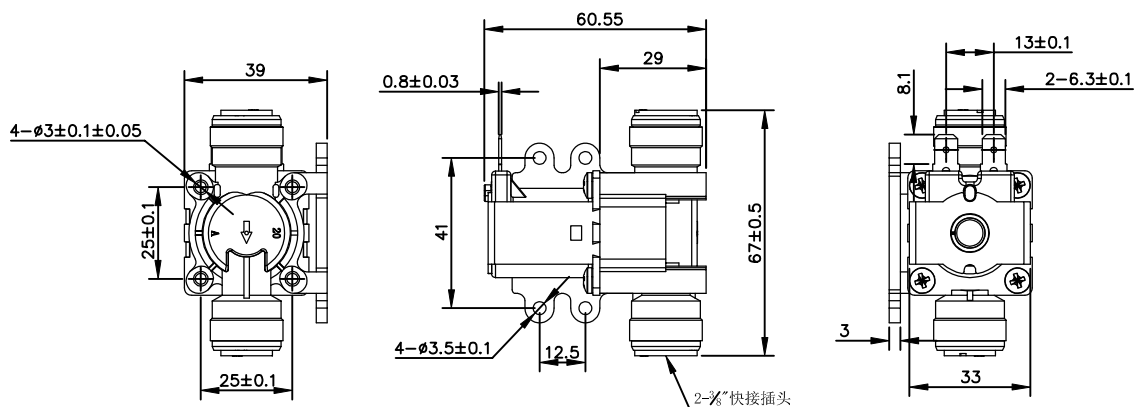
用途 (USE):

净水设备 (Water purifier);  
锅炉 (Boiler);  
洗衣机 (Washing machine);  
浴缸 (Bidet)

### 技术性能参数SPECIFICATION

动作原理 (Principle)	直动式, 先导式 (Straight type, Pilot type)
电压 (Rating voltage)	12VDC, 24VDC, 110VAC/50HZ, 200-240VAC/50HZ
类型 (Type)	常闭 (Normal close)
使用介质 (Medium)	(未结冰) 自来水; 地下水 (Liquid water); (Underground water)
使用压力 (Pressure range)	0.02-0.8MPa (0.2-8bar) / 0.02-1.0MPa (0.2-10bar) (可定制 Customizable)
使用环境温度 (Ambient Temp.)	-25~55℃
最大介质温度 (Max. medium Temp.)	90℃
绝缘等级 (Insulation class)	Class "B" (130℃) / "F" (155℃) / "H" (180℃)
工作周期 (Duty cycle)	100% at 25℃ (for medium Temp.); Intermittent operation at 90℃ (for medium Temp.)
环保/卫生级别 (ROHS/Sanitation grade)	整体符合ROHS, 接触介质部分材料符合FDA及饮用水卫生安全 (Comply with ROHS. According to FDA & drinking water quality for The material of touching the medium)
管道连接方式 (Port size/amounting)	3/8"胶管快插式 G3/8 quick connector
安装固定方式 (Installation type)	可以利用背面板之4个孔或者顶部4个孔用螺钉固定 Use screw to fix the 4 holes on the back pane or top panel.
其余 (Other)	客户要求 (Customizable)

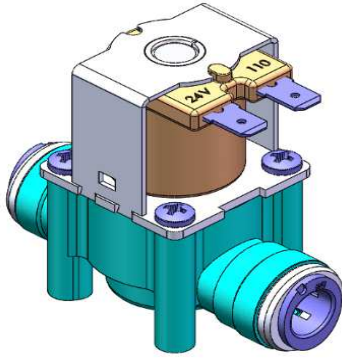
### 外形尺寸DIMENSIONS (mm)





# JL系列电磁阀

## JL series solenoid valve



JL003系列 3/8"快插式电磁阀  
JL003 Solenoid Valve

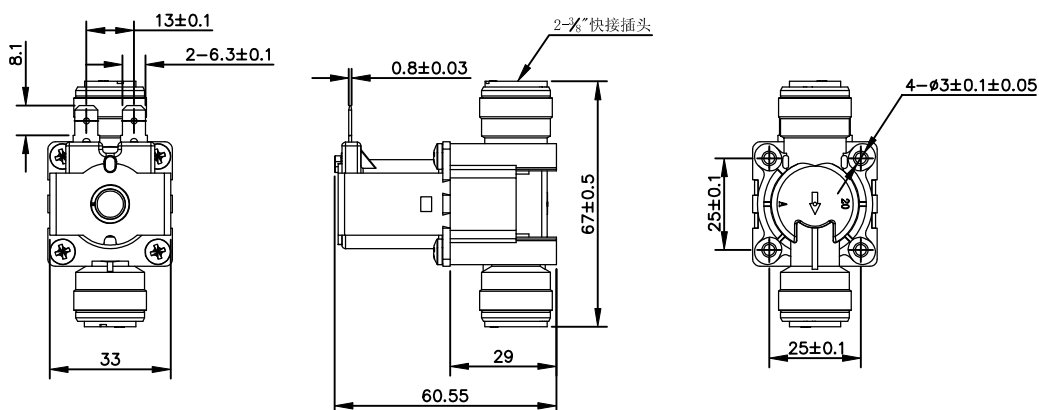
用途 (USE):

净水设备 (Water purifier);  
锅炉 (Boiler);  
洗衣机 (Washing machine);  
浴缸 (Bidet)

### 技术性能参数SPECIFICATION

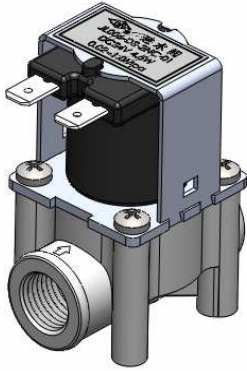
动作原理 (Principle)	直动式, 先导式 (Straight type, Pilot type)
电压 (Rating voltage)	12VDC, 24VDC, 110VAC/50HZ, 200-240VAC/50HZ
类型 (Type)	常闭 (Normal close)
使用介质 (Medium)	(未结冰) 自来水; 地下水 (Liquid water); (Underground water)
使用压力 (Pressure range)	0.02-0.8MPa (0.2-8bar) / 0.02-1.0MPa (0.2-10bar) (可定制 Customizable)
使用环境温度 (Ambient Temp.)	-25~55℃
最大介质温度 (Max. medium Temp.)	90℃
绝缘等级 (Insulation class)	Class "B" (130℃) / "F" (155℃) / "H" (180℃)
工作周期 (Duty cycle)	100% at 25℃ (for medium Temp.); Intermittent operation at 90℃ (for medium Temp.)
环保/卫生级别 (ROHS/Sanitation grade)	整体符合ROHS, 接触介质部分材料符合FDA及饮用水卫生安全 (Comply with ROHS. According to FDA & drinking water quality for The material of touching the medium)
管道连接方式 (Port size/amounting)	3/8"胶管快插式 G3/8 quick connector
安装固定方式 (Installation type)	可以利用顶部4个孔用螺钉固定 Use screw to fix the 4 holes on the top panel
其余 (Other)	客户要求 (Customizable)

### 外形尺寸DIMENSIONS (mm)





# JL系列电磁阀 JL series solenoid valve



JL006系列1/4" 管螺纹电磁阀  
JL006 G1/4 Solenoid Valve

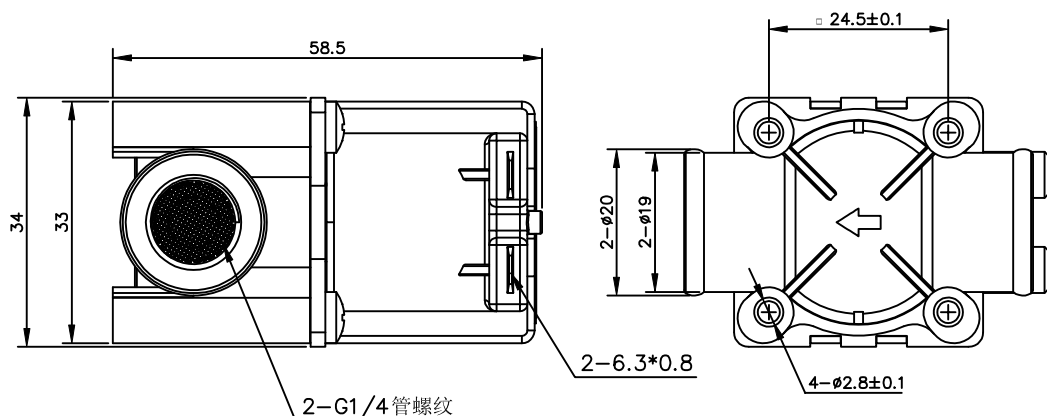
用途 (USE):

净水设备 (Water purifier);  
锅炉 (Boiler);  
洗衣(碗)机 (Washing machine/dish-washing machine);  
浴缸 (Bidet)

## 技术性能参数SPECIFICATION

动作原理 (Principle)	直动式, 先导式 (Straight type, Pilot type)
电压 (Rating voltage)	12VDC, 24VDC, 110VAC/50HZ, 200-240VAC/50HZ
类型 (Type)	常闭 (Normal close)
使用压力 (Pressure range)	0.02-0.8MPa (0.2-8bar) / 0.02-1.0MPa (0.2-10bar) (可定制Customizable)
使用介质 (Medium)	(未结冰) 自来水; 地下水 (Liquid water); (Underground water)
使用压力 (Pressure range)	0.02-0.8MPa (0.2-8bar)
使用环境温度 (Ambient Temp.)	-25~55℃
最大介质温度 (Max. medium Temp.)	90℃
绝缘等级 (Insulation class)	Class "B" (130℃) / "F" (155℃) / "H" (180℃)
工作周期 (Duty cycle)	100% at 25℃ (for medium Temp.); Intermittent operation at 90℃ (for medium Temp.)
环保/卫生级别 (ROHS/Sanitation grade)	整体符合ROHS, 接触介质部分材料符合FDA及饮用水卫生安全 (Comply with ROHS. According to FDA & drinking water quality for The material of touching the medium)
管道连接方式 (Port size/amounting)	管道连接方式1/4"管螺纹 G1/4solenoid connector
安装固定方式 (Installation type)	可以利用顶部4个孔用螺钉固定 Use screw to fix the 4 holes on the top panel
其余 (Other)	客户要求 (Customizable)

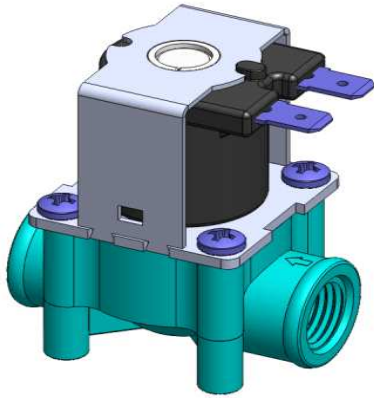
## 外形尺寸DIMENSIONS (mm)





# JL系列电磁阀

## JL series solenoid valve



JL006系列 1/4" 带废水比电磁阀  
JL006 G1/4 Wastewater Valve

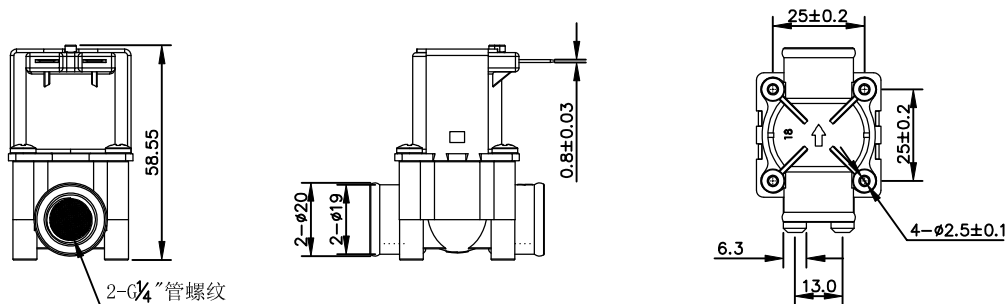
用途 (USE):

净水设备 (Water purifier);

### 技术性能参数SPECIFICATION

动作原理 (Principle)	直动式, 先导式 (Straight type, Pilot type)
电压 (Rating voltage)	12VDC, 24VDC, 110VAC/50HZ, 200-240VAC/50HZ
类型 (Type)	常闭 (Normal close)
废水流量 (Wastewater flow)	300±30ml/Min. (无电压输入, 在0.5Mpa水压下, ) (其它可定制) 300±30ml/Min. (Base on no voltage input and hydraulic pressure 0.5Mpa) (Customizable)
使用介质 (Medium)	(未结冰) 自来水; 地下水 (Liquid water); (Underground water)
使用压力 (Pressure range)	0.02-0.8MPa (0.2-8bar)
使用环境温度 (Ambient Temp.)	-25~55℃
最大介质温度 (Max. medium Temp.)	90℃
绝缘等级 (Insulation class)	Class "B" (130℃) / "F" (155℃) / "H" (180℃)
工作周期 (Duty cycle)	100% at 25℃ (for medium Temp.); Intermittent operation at 90℃ (for medium Temp.)
环保/卫生级别 (ROHS/Sanitation grade)	整体符合ROHS, 接触介质部分材料符合FDA及饮用水卫生安全 (Comply with ROHS. According to FDA & drinking water quality for The material of touching the medium)
管道连接方式 (Port size/amounting)	管道连接方式1/4"管螺纹 G1/4 solenoid connector
安装固定方式 (Installation type)	可以利用顶部4个孔用螺钉固定 Use screw to fix the 4 holes on the top panel
其余 (Other)	客户要求 (Customizable)

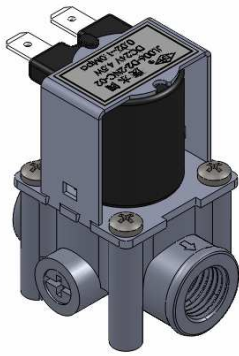
### 外形尺寸DIMENSIONS (mm)







# JL系列电磁阀 JL series solenoid valve



JL006系列1/4"带废水比电磁阀  
JL006 G1/4 Wastewater Valve

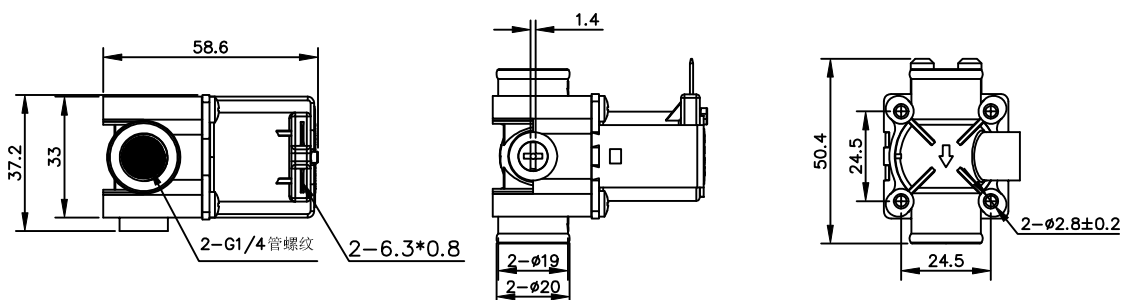
用途 (USE):

净水设备 (Water purifier);

## 技术性能参数SPECIFICATION

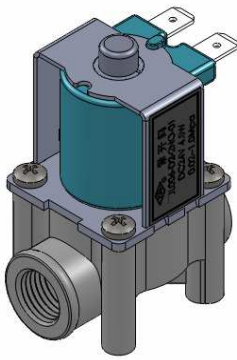
动作原理 (Principle)	直动式, 先导式 (Straight type, Pilot type)
电压 (Rating voltage)	12VDC, 24VDC, 110VAC/50HZ, 200-240VAC/50HZ
类型 (Type)	常闭 (Normal close)
废水流量 (Wastewater flow)	300±30ml/Min. (无电压输入, 在0.5Mpa水压下, ) (其它可定制) 300±30ml/Min. (Base on no voltage input and hydraulic pressure 0.5Mpa) (Customizable)
使用介质 (Medium)	(未结冰) 自来水; 地下水 (Liquid water); (Underground water)
使用压力 (Pressure range)	0.02-0.8MPa (0.2-8bar)
使用环境温度 (Ambient Temp.)	-25~55℃
最大介质温度 (Max. medium Temp.)	90℃
绝缘等级 (Insulation class)	Class "B" (130℃) / "F" (155℃) / "H" (180℃)
工作周期 (Duty cycle)	100% at 25℃ (for medium Temp.); Intermittent operation at 90℃ (for medium Temp.)
环保/卫生级别 (ROHS/Sanitation grade)	整体符合ROHS, 接触介质部分材料符合FDA及饮用水卫生安全 (Comply with ROHS. According to FDA & drinking water quality for The material of touching the medium)
管道连接方式 (Port size/amounting)	管道连接方式1/4"管螺纹 G1/4 solenoid connector
安装固定方式 (Installation type)	可以利用顶部4个孔用螺钉固定 Use screw to fix the 4 holes on the top panel
其余 (Other)	客户要求 (Customizable)

## 外形尺寸DIMENSIONS (mm)





# JL系列电磁阀 JL series solenoid valve



JL006系列1/4"管螺纹常开电磁阀  
JL006 G1/4 Normal Open Valve

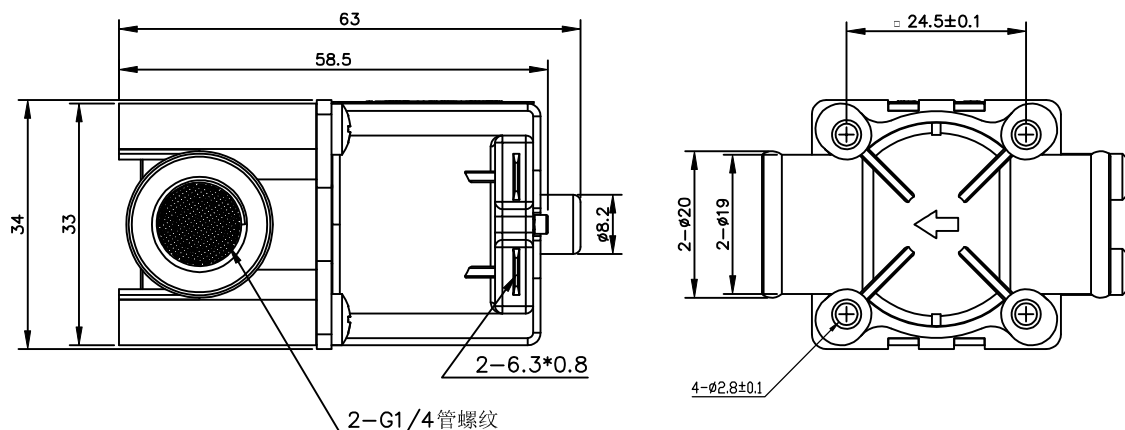
用途 (USE):

净水设备 (Water purifier);  
锅炉 (Boiler);  
洗衣(碗)机 (Washing machine);  
浴缸 (Bidet)

## 技术性能参数SPECIFICATION

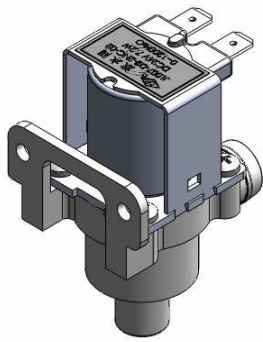
动作原理 (Principle)	先导式 Pilot type
电压 (Rating voltage)	12VDC, 24VDC, 110VAC/50HZ, 200-240VAC/50HZ
类型 (Type)	常开 (Normal Open)
使用介质 (Medium)	(未结冰) 自来水; 地下水 (Liquid water); (Underground water)
使用压力 (Pressure range)	0.02-0.8MPa (0.2-8bar)/0.02-1.0MPa (0.2-10bar) (可定制Customizable)
使用环境温度 (Ambient Temp.)	-25~55℃
最大介质温度 (Max. medium Temp.)	90℃
绝缘等级 (Insulation class)	Class "B" (130℃) / "F" (155℃) / "H" (180℃)
工作周期 (Duty cycle)	100% at 25℃ (for medium Temp.); Intermittent operation at 90℃ (for medium Temp.)
环保/卫生级别 (ROHS/Sanitation grade)	整体符合ROHS, 接触介质部分材料符合FDA及饮用水卫生安全 (Comply with ROHS. According to FDA & drinking water quality for The material of touching the medium)
管道连接方式 Port size/amounting)	管道连接方式1/4"管螺纹 G1/4 solenoid connector
安装固定方式 (Installation type)	可以利用顶部4个孔用螺钉固定 Use screw to fix the 4 holes on the top panel
其余 (Other)	客户要求 (Customizable)

## 外形尺寸DIMENSIONS (mm)





# JL系列电磁阀 JL series solenoid valve



JL007 系列电磁阀  
JL007 Solenoid Valve

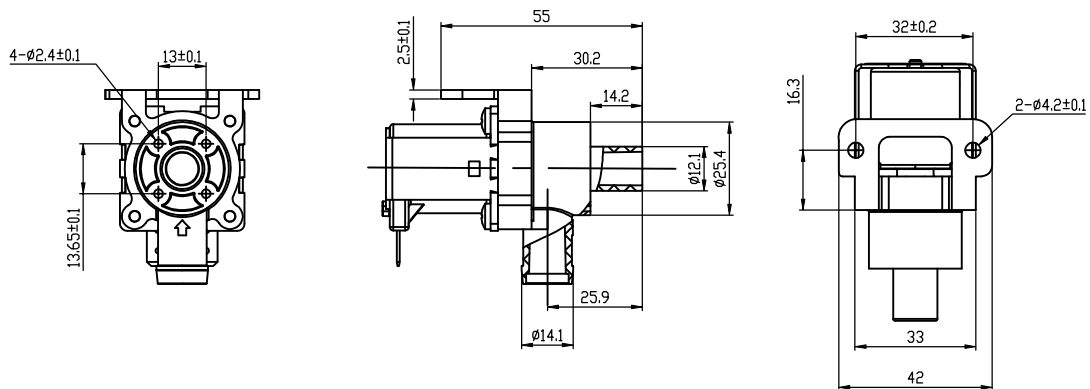
用途 (USE):

移动空调 (Air-condition);  
饮水设备 (Water purifier);  
咖啡机 (Coffee machine);  
果汁机 (Juice machine)

## 技术性能参数SPECIFICATION

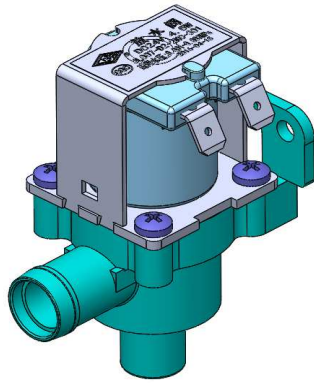
动作原理 (Principle)	直动式 Straight type
电压 (Rating voltage)	12VDC, 24VDC
类型 (Type)	常闭 (Normal close)
使用介质 (Medium)	(未结冰) 自来水; 地下水; 饮料 (无颗粒) (Liquid water); (Underground water); (Juice)
使用压力 (Pressure range)	M. O. P. D: 300mmH <sub>2</sub> O (0—0.003Mpa) (直动式Straight type)
使用环境温度 (Ambient Temp.)	-25~55℃
最大介质温度 (Max. medium Temp.)	90℃
绝缘等级 (Insulation class)	Class "B" (130℃) / "F" (155℃) / "H" (180℃)
工作周期 (Duty cycle)	100% at 25℃ (for medium Temp.); Intermittent operation at 90℃ (for medium Temp.)
环保/卫生级别 (ROHS/Sanitation grade)	整体符合ROHS, 接触介质部分材料符合FDA及饮用水卫生安全 (Comply with ROHS. According to FDA & drinking water quality for The material of touching the medium)
管道连接方式 (Port size/amounting)	软管连接 Hose connection
安装固定方式 (Installation type)	可以利用侧边2个孔用螺钉固定 Use screw to fix the 2 holes on the back panel
其余 (Other)	客户要求 (Customizable)

## 外形尺寸DIMENSIONS (mm)





# JL系列电磁阀 JL series solenoid valve



JL007 系列电磁阀  
JL007 Solenoid Valve

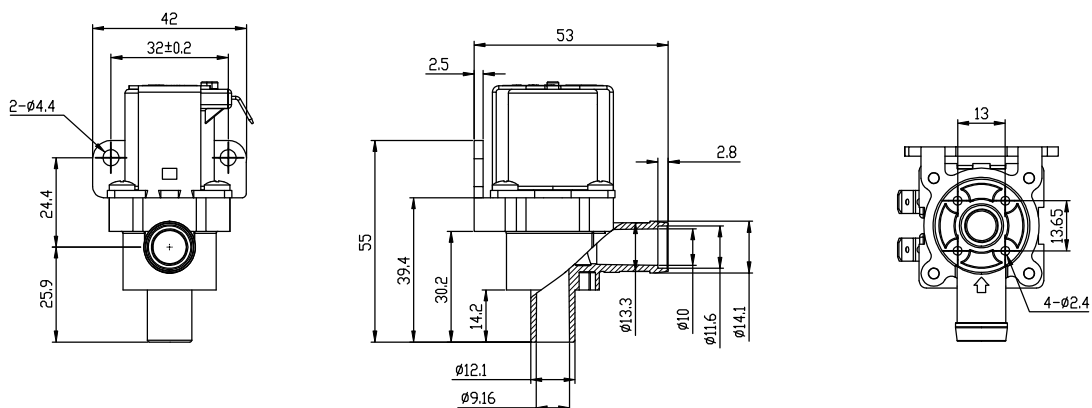
用途 (USE):

移动空调 (Air-condition);  
饮水设备 (Water purifier);  
咖啡机 (Coffee machine);  
果汁机 (Juice machine)

## 技术性能参数SPECIFICATION

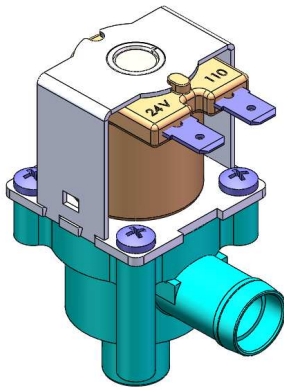
动作原理 (Principle)	直动式 Straight type
电压 (Rating voltage)	12VDC, 24VDC
类型 (Type)	常闭 (Normal close)
使用介质 (Medium)	(未结冰) 自来水; 地下水; 饮料 (无颗粒) (Liquid water); (Underground water); (Juice)
使用压力 (Pressure range)	M. O. P. D: 300mmH <sub>2</sub> O (0—0.003Mpa) (直动式Straight type)
使用环境温度 (Ambient Temp.)	-25~55℃
最大介质温度 (Max. medium Temp.)	90℃
绝缘等级 (Insulation class)	Class "B" (130℃) / "F" (155℃) / "H" (180℃)
工作周期 (Duty cycle)	100% at 25℃ (for medium Temp.); Intermittent operation at 90℃ (for medium Temp.)
环保/卫生级别 (ROHS/Sanitation grade)	整体符合ROHS, 接触介质部分材料符合FDA及饮用水卫生安全 (Comply with ROHS. According to FDA & drinking water quality for The material of touching the medium)
管道连接方式 (Port size/amounting)	软管连接 Hose connection
安装固定方式 (Installation type)	可以利用侧边2个孔用螺钉固定 Use screw to fix the 2 holes on the back panel
其余 (Other)	客户要求 (Customizable)

## 外形尺寸DIMENSIONS (mm)





# JL系列电磁阀 JL series solenoid valve



JL007 系列电磁阀  
JL007 Solenoid Valve

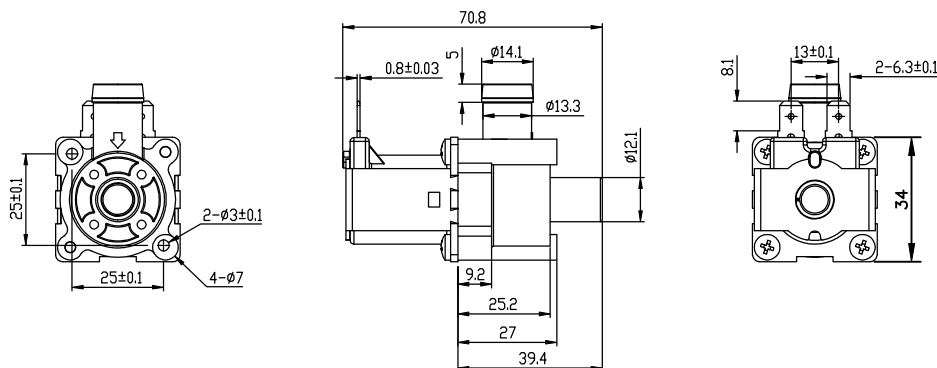
用途 (USE):

移动空调 (Air-condition);  
饮水设备 (Water purifier);  
咖啡机 (Coffee machine);  
果汁机 (Juice machine)

## 技术性能参数SPECIFICATION

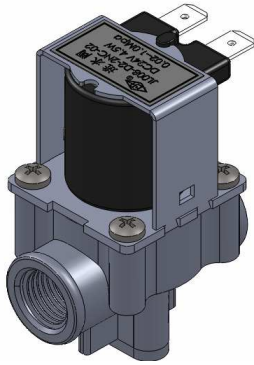
动作原理 (Principle)	直动式 Straight type
电压 (Rating voltage)	12VDC, 24VDC
类型 (Type)	常闭 (Normal close)
使用介质 (Medium)	(未结冰) 自来水; 地下水; 饮料 (无颗粒) (Liquid water); (Underground water); (Juice)
使用压力 (Pressure range)	M. O. P. D: 300mmH <sub>2</sub> O (0-0.003Mpa) (直动式 Straight type)
使用环境温度 (Ambient Temp.)	-25~55℃
最大介质温度 (Max. medium Temp.)	90℃
绝缘等级 (Insulation class)	Class "B" (130℃) / "F" (155℃) / "H" (180℃)
工作周期 (Duty cycle)	100% at 25℃ (for medium Temp.); Intermittent operation at 90℃ (for medium Temp.)
环保/卫生级别 (ROHS/Sanitation grade)	整体符合ROHS, 接触介质部分材料符合FDA及饮用水卫生安全 (Comply with ROHS. According to FDA & drinking water quality for The material of touching the medium)
管道连接方式 (Port size/amounting)	软管连接 Hose connection
安装固定方式 (Installation type)	可以利用顶部2个孔用螺钉固定 Use screw to fix the 2 holes on the top panel
其余 (Other)	客户要求 (Customizable)

## 外形尺寸DIMENSIONS (mm)





# JL系列电磁阀 JL series solenoid valve



JL008系列1/4" 管螺纹水阀  
JL008 G1/4 Solenoid Valve

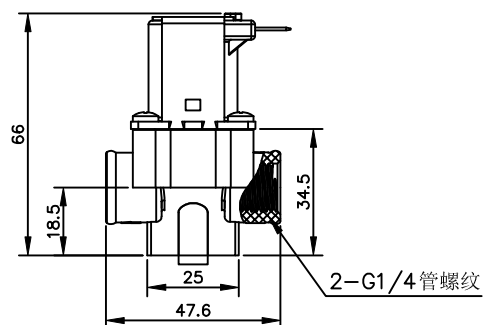
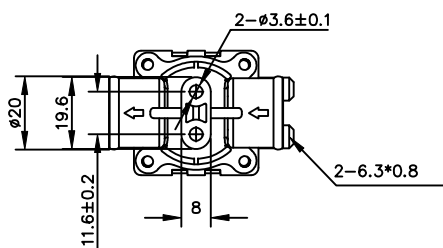
用途 (USE):

净水设备 (Water purifier);  
锅炉 (Boiler);  
洗衣机 (Washing machine);  
浴缸 (Bidet)

## 技术性能参数SPECIFICATION

动作原理 (Principle)	直动式, 先导式 (Straight type, Pilot type)
电压 (Rating voltage)	12VDC, 24VDC, 110VAC/50HZ, 200-240VAC/50HZ
类型 (Type)	常闭 (Normal close)
使用介质 (Medium)	(未结冰) 自来水; 地下水 (Liquid water); (Underground water)
使用压力 (Pressure range)	0.02-0.8MPa (0.2-8bar) / 0.02-1.0MPa (0.2-10bar) (可定制Customizable)
使用环境温度 (Ambient Temp.)	-25~55℃
最大介质温度 (Max. medium Temp.)	90℃
绝缘等级 (Insulation class)	Class "B" (130℃) / "F" (155℃) / "H" (180℃)
工作周期 (Duty cycle)	100% at 25℃ (for medium Temp.); Intermittent operation at 90℃ (for medium Temp.)
环保/卫生级别 (ROHS/Sanitation grade)	整体符合ROHS, 接触介质部分材料符合FDA及饮用水卫生安全 (Comply with ROHS. According to FDA & drinking water quality for The material of touching the medium)
管道连接方式 (Port size/amounting)	管道连接方式1/4" 管螺纹 G1/4 solenoid connector
安装固定方式 (Installation type)	利用顶部凸筋及2个孔用自攻螺钉固定 Use screw to fix the 2 holes on the top panel
其余 (Other)	客户要求 (Customizable)

## 外形尺寸DIMENSIONS (mm)



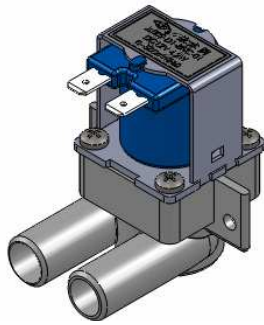


# JL系列电磁阀 JL series solenoid valve

JL009系列电磁阀  
JL009 Solenoid Valve

用途 (USE):

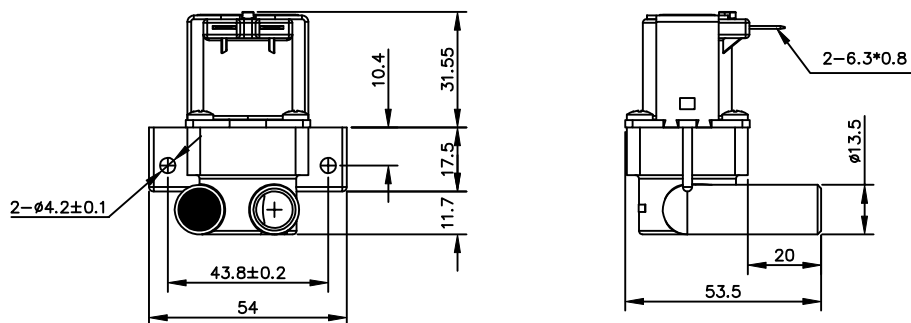
移动空调 (Air-condition);  
饮水设备 (Water purifier);  
咖啡机 (Coffee machine);  
果汁机 (Juice machine)



## 技术性能参数SPECIFICATION

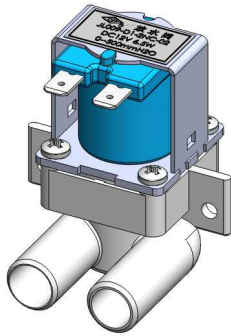
动作原理 (Principle)	直动式 Straight type
电压 (Rating voltage)	12VDC, 24VDC
类型 (Type)	常闭 (Normal close)
使用介质 (Medium)	(未结冰) 自来水; 地下水; 饮料 (无颗粒) (Liquid water); (Underground water); (Juice)
使用压力 (Pressure range)	M. O. P. D: 500mmH <sub>2</sub> O (0--0.005Mpa) (直动式Straight type)
使用环境温度 (Ambient Temp.)	-25~55℃
最大介质温度 (Max. medium Temp.)	60℃
绝缘等级 (Insulation class)	Class "B" (130℃) / "F" (155℃) / "H" (180℃)
工作周期 (Duty cycle)	100% at 25℃ (for medium Temp.); Intermittent operation at 60℃ (for medium Temp.)
环保/卫生级别 (ROHS/Sanitation grade)	整体符合ROHS, 接触介质部分材料符合FDA及饮用水卫生安全 (According to ROHS. According to FDA & drinking water quality for The material of touching the medium)
管道连接方式 (Port size/amounting)	软管连接 Hose connection
安装固定方式 (Installation type)	可以利用侧边2个孔用螺钉固定 Use screw to fix the 2 holes on the back panel
其余 (Other)	客户要求 (Customizable)

## 外形尺寸DIMENSIONS (mm)





# JL系列电磁阀 JL series solenoid valve



JL009系列电磁阀  
JL009 Solenoid Valve

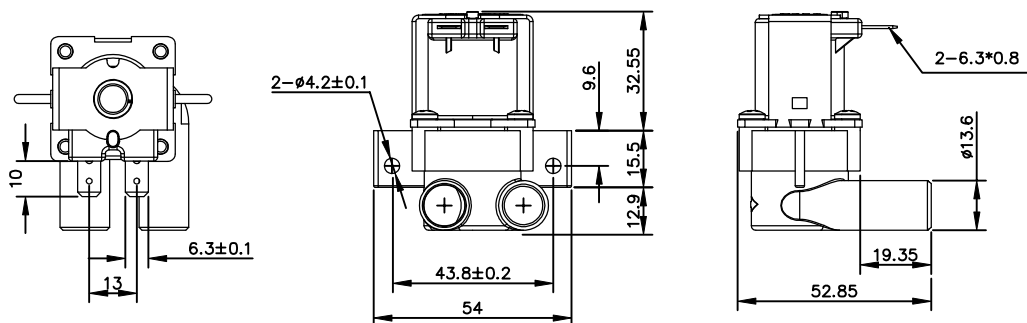
用途 (USE):

移动空调 (Air-condition);  
饮水设备 (Water purifier);  
咖啡机 (Coffee machine);  
果汁机 (Juice machine)

## 技术性能参数SPECIFICATION

动作原理 (Principle)	直动式 Straight type
电压 (Rating voltage)	12VDC, 24VDC
类型 (Type)	常闭 (Normal close)
使用介质 (Medium)	(未结冰) 自来水; 地下水; 饮料 (无颗粒) (Liquid water); (Underground water); (Juice)
使用压力 (Pressure range)	M. O. P. D: 500mmH <sub>2</sub> O (0--0.005Mpa) (直动式Straight type)
使用环境温度 (Ambient Temp.)	-25~55℃
最大介质温度 (Max. medium Temp.)	60℃
绝缘等级 (Insulation class)	Class "B" (130℃) / "F" (155℃) / "H" (180℃)
工作周期 (Duty cycle)	100% at 25℃ (for medium Temp.); Intermittent operation at 60℃ (for medium Temp.)
环保/卫生级别 (ROHS/Sanitation grade)	整体符合ROHS, 接触介质部分材料符合FDA及饮用水卫生安全 (According to ROHS. According to FDA&drinking water quality for The material of touching the medium)
管道连接方式 (Port size/amounting)	软管连接 Hose connection
安装固定方式 (Installation type)	可以利用侧边2个孔用螺钉固定 Use screw to fix the 2 holes on the back panel
其余 (Other)	客户要求 (Customizable)

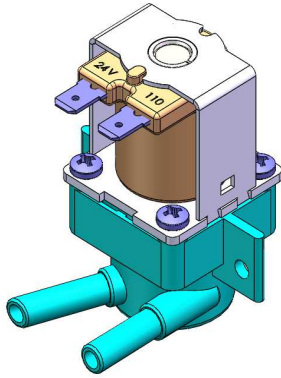
## 外形尺寸DIMENSIONS (mm)







# JL系列电磁阀 JL series solenoid valve



JL009系列电磁阀  
JL009 Solenoid Valve

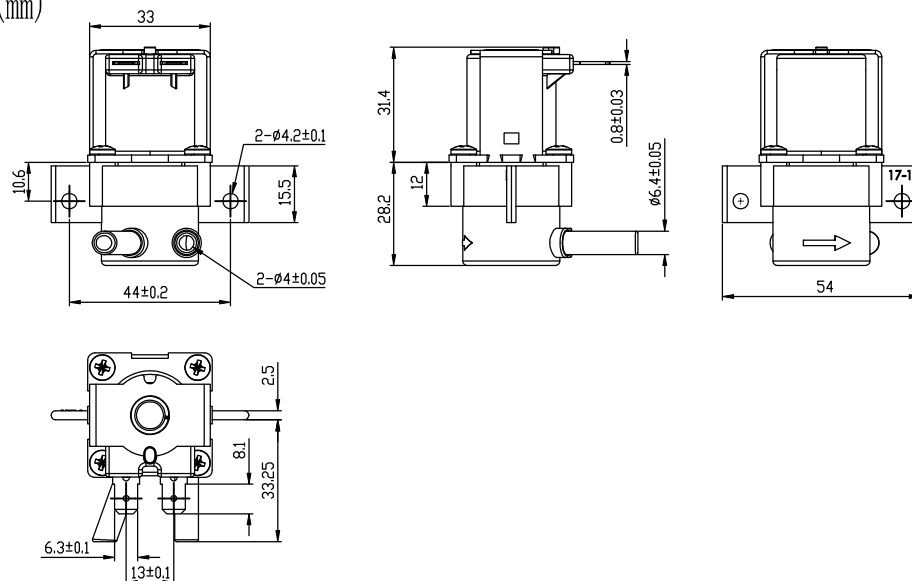
用途 (USE):

移动空调 (Air-condition);  
饮水设备 (Water purifier);  
咖啡机 (Coffee machine);  
果汁机 (Juice machine)

## 技术性能参数SPECIFICATION

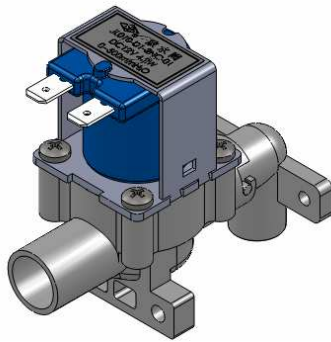
动作原理 (Principle)	直动式 Straight type
电压 (Rating voltage)	12VDC, 24VDC
类型 (Type)	常闭 (Normal close)
使用介质 (Medium)	(未结冰) 自来水; 地下水; 饮料 (无颗粒) (Liquid water); (Underground water); (Juice)
使用压力 (Pressure range)	M. O. P. D: 500mmH <sub>2</sub> O (0--0.005Mpa) (直动式Straight type)
使用环境温度 (Ambient Temp.)	-25~55℃
最大介质温度 (Max. medium Temp.)	60℃
绝缘等级 (Insulation class)	Class "B" (130℃) / "F" (155℃) / "H" (180℃)
工作周期 (Duty cycle)	100% at 25℃ (for medium Temp.); Intermittent operation at 60℃ (for medium Temp.)
环保/卫生级别 (ROHS/Sanitation grade)	整体符合ROHS, 接触介质部分材料符合FDA及饮用水卫生安全 (According to ROHS. According to FDA & drinking water quality for The material of touching the medium)
管道连接方式 (Port size/amounting)	软管连接 Hose connection
安装固定方式 (Installation type)	可以利用侧边2个孔用螺钉固定 Use screw to fix the 2 holes on the back panel
其余 (Other)	客户要求 (Customizable)

## 外形尺寸DIMENSIONS (mm)





# JL系列电磁阀 JL series solenoid valve



JL10系列电磁阀  
JL10 Solenoid Valve

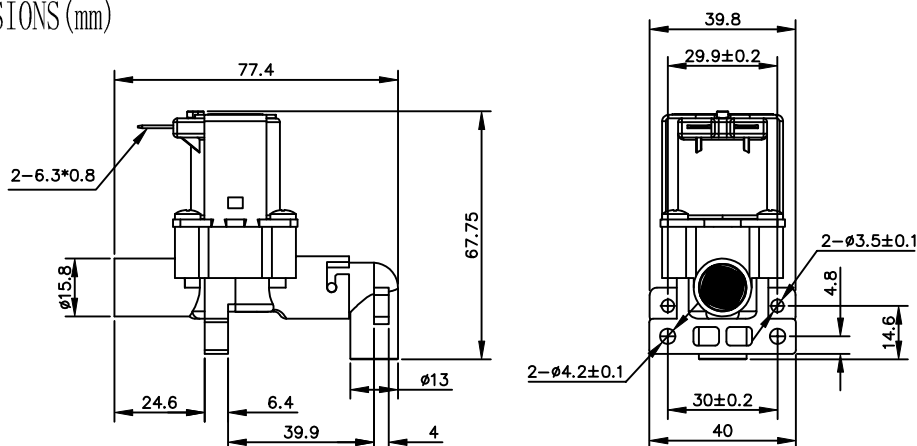
用途 (USE):

移动空调 (Air-condition);  
饮水设备 (Water purifier);  
咖啡机 (Coffee machine);  
果汁机 (Juice machine)

## 技术性能参数SPECIFICATION

动作原理 (Principle)	直动式 Straight type
电压 (Rating voltage)	12VDC, 24VDC
类型 (Type)	常闭 (Normal close)
使用介质 (Medium)	(未结冰) 自来水; 地下水; 饮料 (无颗粒) (Liquid water); (Underground water); (Juice)
使用压力 (Pressure range)	M. O. P. D: 500mmH <sub>2</sub> O (0--0.005Mpa) (直动式Straight type)
使用环境温度 (Ambient Temp.)	-25~55℃
最大介质温度 (Max. medium Temp.)	60℃
绝缘等级 (Insulation class)	Class "B" (130℃) / "F" (155℃) / "H" (180℃)
工作周期 (Duty cycle)	100% at 25℃ (for medium Temp.); Intermittent operation at 60℃ (for medium Temp.)
环保/卫生级别 (ROHS/Sanitation grade)	整体符合ROHS, 接触介质部分材料符合FDA及饮用水卫生安全 (Comply with ROHS. According to FDA & drinking water quality for The material of touching the medium)
管道连接方式 (Port size/amounting)	软管连接 Hose connection
安装固定方式 (Installation type)	可以利用底部4个孔用螺钉固定 Use screw to fix the 4 holes on the bottom panel
其余 (Other)	客户要求 (Customizable)

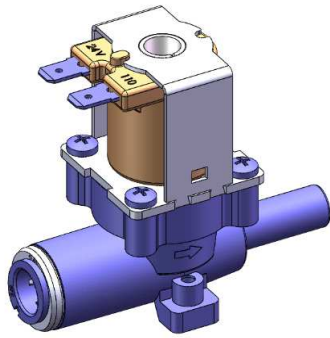
## 外形尺寸DIMENSIONS (mm)





# JL系列电磁阀

## JL series solenoid valve



JL003系列 3/8"快插式电磁阀  
JL003 Solenoid Valve

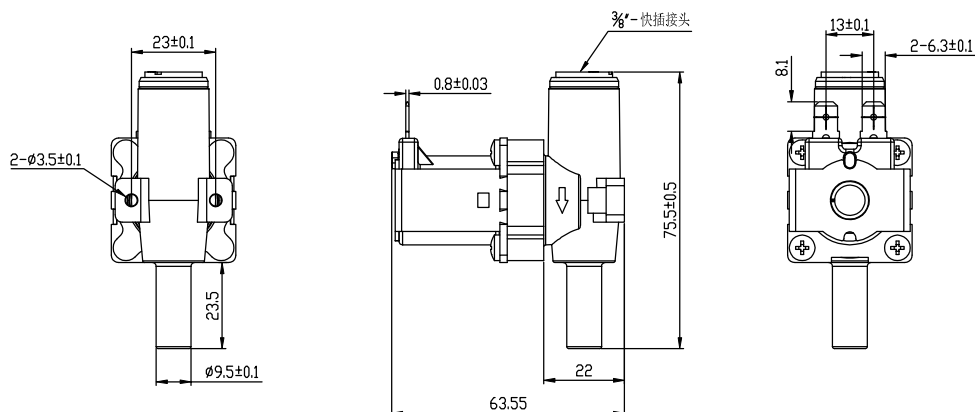
用途 (USE):

净水设备 (Water purifier);  
锅炉 (Boiler);  
洗衣机 (Washing machine);  
浴缸 (Bidet)

### 技术性能参数SPECIFICATION

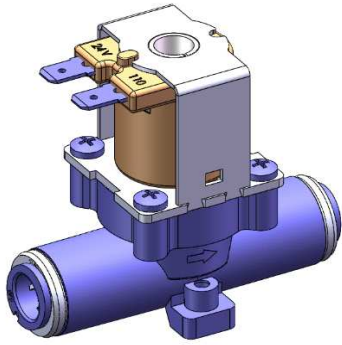
动作原理 (Principle)	直动式, 先导式 (Straight type, Pilot type)
电压 (Rating voltage)	12VDC, 24VDC, 110VAC/50HZ, 200-240VAC/50HZ
类型 (Type)	常闭 (Normal close)
使用介质 (Medium)	(未结冰) 自来水; 地下水 (Liquid water); (Underground water)
使用压力 (Pressure range)	0.02-0.8MPa (0.2-8bar) / 0.02-1.0MPa (0.2-10bar) (可定制 Customizable)
使用环境温度 (Ambient Temp.)	-25~55℃
最大介质温度 (Max. medium Temp.)	90℃
绝缘等级 (Insulation class)	Class "B" (130℃) / "F" (155℃) / "H" (180℃)
工作周期 (Duty cycle)	100% at 25℃ (for medium Temp.); Intermittent operation at 90℃ (for medium Temp.)
环保/卫生级别 (ROHS/Sanitation grade)	整体符合ROHS, 接触介质部分材料符合FDA及饮用水卫生安全 (Comply with ROHS. According to FDA & drinking water quality for The material of touching the medium)
管道连接方式 (Port size/amounting)	3/8"胶管快插式 G3/8 quick connector
安装固定方式 (Installation type)	可以利用顶部2个孔用螺钉固定 Use screw to fix the 2 holes on the top panel
其余 (Other)	客户要求 (Customizable)

### 外形尺寸DIMENSIONS (mm)





# JL系列电磁阀 JL series solenoid valve



JL003系列 3/8"快插式电磁阀  
JL003 Solenoid Valve

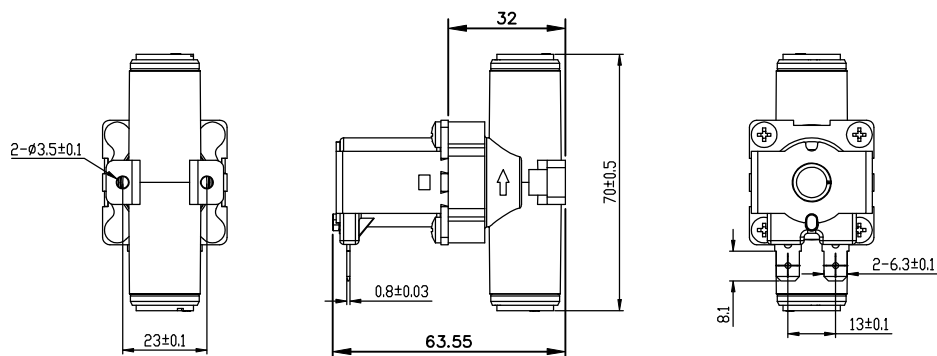
用途 (USE):

净水设备 (Water purifier);  
锅炉 (Boiler);  
洗衣机 (Washing machine);  
浴缸 (Bidet)

## 技术性能参数SPECIFICATION

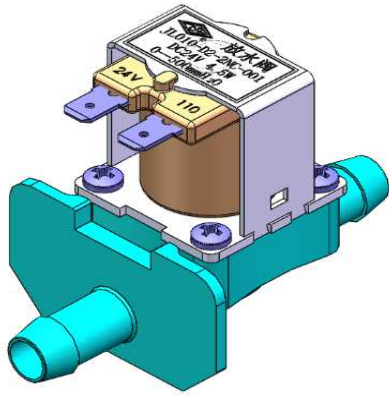
动作原理 (Principle)	直动式, 先导式 (Straight type, Pilot type)
电压 (Rating voltage)	12VDC, 24VDC, 110VAC/50HZ, 200-240VAC/50HZ
类型 (Type)	常闭 (Normal close)
使用介质 (Medium)	(未结冰) 自来水; 地下水 (Liquid water); (Underground water)
使用压力 (Pressure range)	0.02-0.8MPa (0.2-8bar) / 0.02-1.0MPa (0.2-10bar) (可定制 Customizable)
使用环境温度 (Ambient Temp.)	-25~55℃
最大介质温度 (Max. medium Temp.)	90℃
绝缘等级 (Insulation class)	Class "B" (130℃) / "F" (155℃) / "H" (180℃)
工作周期 (Duty cycle)	100% at 25℃ (for medium Temp.); Intermittent operation at 90℃ (for medium Temp.)
环保/卫生级别 (ROHS/Sanitation grade)	整体符合ROHS, 接触介质部分材料符合FDA及饮用水卫生安全 (Comply with ROHS. According to FDA & drinking water quality for The material of touching the medium)
管道连接方式 (Port size/amounting)	3/8"胶管快插式 G3/8 quick connector
安装固定方式 (Installation type)	可以利用顶部2个孔用螺钉固定 Use screw to fix the 2 holes on the top panel
其余 (Other)	客户要求 (Customizable)

## 外形尺寸DIMENSIONS (mm)





# JL系列电磁阀 JL series solenoid valve



JL10系列电磁阀  
JL10 Solenoid Valve

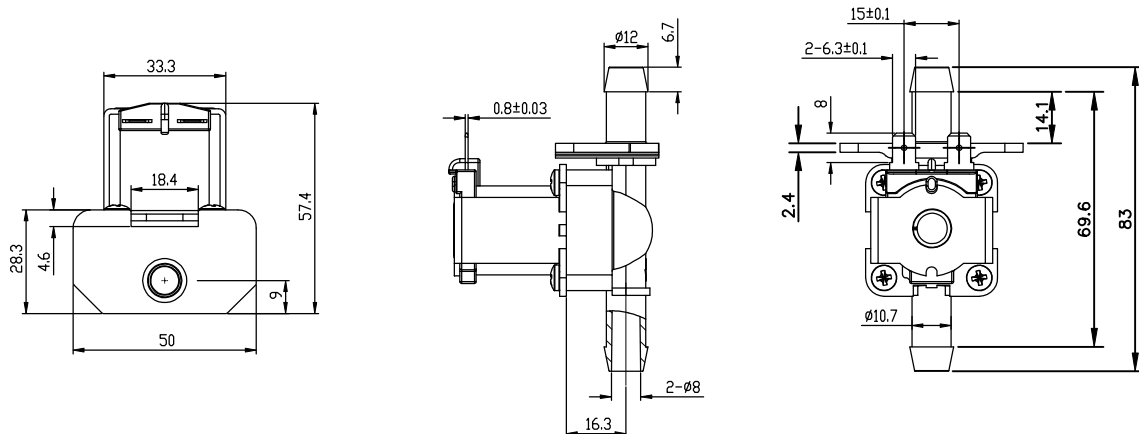
用途 (USE):

移动空调 (Air-condition);  
饮水设备 (Water purifier);  
咖啡机 (Coffee machine);  
果汁机 (Juice machine)

## 技术性能参数SPECIFICATION

动作原理 (Principle)	直动式 Straight type
电压 (Rating voltage)	12VDC, 24VDC, 110VAC/50HZ, 200-240VAC/50HZ
类型 (Type)	常闭 (Normal close)
使用介质 (Medium)	(未结冰) 自来水; 地下水; 饮料 (无颗粒) (Liquid water); (Underground water); (Juice)
使用压力 (Pressure range)	M. O. P. D: 500mmH <sub>2</sub> O (0--0.005Mpa) (直动式Straight type)
使用环境温度 (Ambient Temp.)	-25~55℃
最大介质温度 (Max. medium Temp.)	60℃
绝缘等级 (Insulation class)	Class "B" (130℃) / "F" (155℃) / "H" (180℃)
工作周期 (Duty cycle)	100% at 25℃ (for medium Temp.); Intermittent operation at 60℃ (for medium Temp.)
环保/卫生级别 (ROHS/Sanitation grade)	整体符合ROHS, 接触介质部分材料符合FDA及饮用水卫生安全 (Comply with ROHS. According to FDA & drinking water quality for The material of touching the medium)
管道连接方式 (Port size/amounting)	软管连接 Hose connection
安装固定方式 (Installation type)	
其余 (Other)	客户要求 (Customizable)

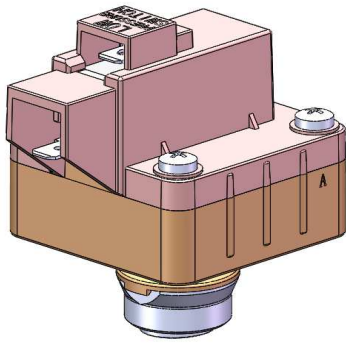
## 外形尺寸DIMENSIONS (mm)





# JL系列电磁阀

## JL series solenoid valve



JL003系列1/4"快插式低压开关  
JL003 Low Pressure Switch

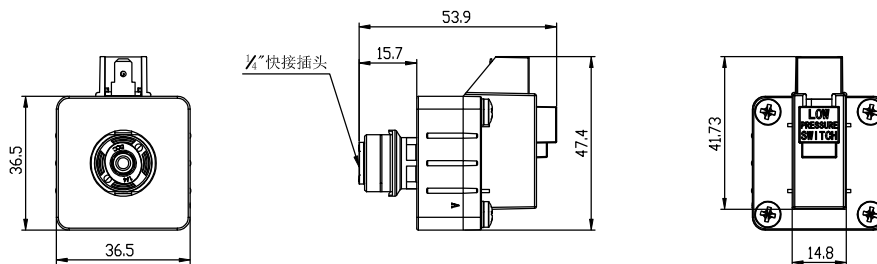
用途 (USE):

净水设备 (Water purifier);  
锅炉 (Boiler);  
洗衣机 (Washing machine);  
浴缸 (Bidet)

### 技术性能参数SPECIFICATION

电压 (Rating voltage)	12VDC, 24VDC, 110VAC/50HZ, 200-240VAC/50HZ
类型 (Type)	常开 (Normal Open)
使用介质 (Medium)	(未结冰)自来水; 地下水 (Liquid water); (Underground water)
动作特性 (Performance Characteristic)	当水压从0上升到0.05MPa±0.05MPa时, 开关闭合; 当水压下降到0.03MPa±0.02MPa时, 开关断开。
使用压力 (Pressure range)	0~0.4MPa(0~4bar)
使用环境温度 (Ambient Temp.)	-25~55℃
最大介质温度 (Max. medium Temp.)	90℃
绝缘等级 (Insulation class)	Class "B" (130℃) / "F" (155℃) / "H" (180℃)
工作周期 (Duty cycle)	100% at 25℃ (for medium Temp.); Intermittent operation at 90℃ (for medium Temp.)
环保/卫生级别 (ROHS/Sanitation grade)	整体符合ROHS, 接触介质部分材料符合FDA及饮用水卫生安全 (Comply with ROHS. According to FDA & drinking water quality for The material of touching the medium)
管道连接方式 (Port size/amounting)	1/4"胶管快插式 G1/4 quick connector
其余 (Other)	客户要求 (Customizable)

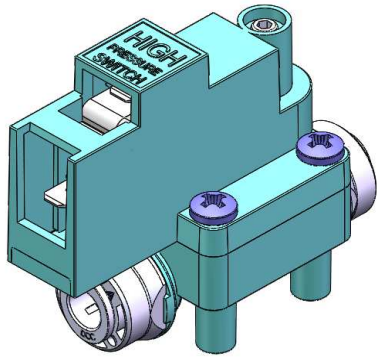
### 外形尺寸DIMENSIONS (mm)





# JL系列电磁阀

## JL series solenoid valve



JL003系列1/4"快插式高压开关  
JL003 High Pressure Switch

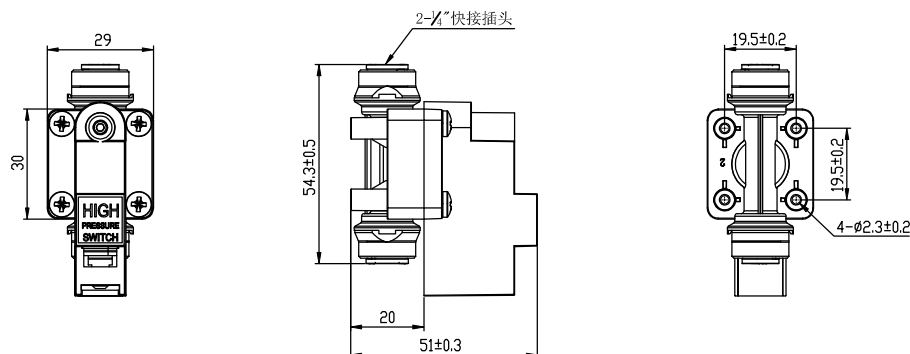
用途 (USE):

净水设备 (Water purifier);  
锅炉 (Boiler);  
洗衣机 (Washing machine);  
浴缸 (Bidet)

### 技术性能参数SPECIFICATION

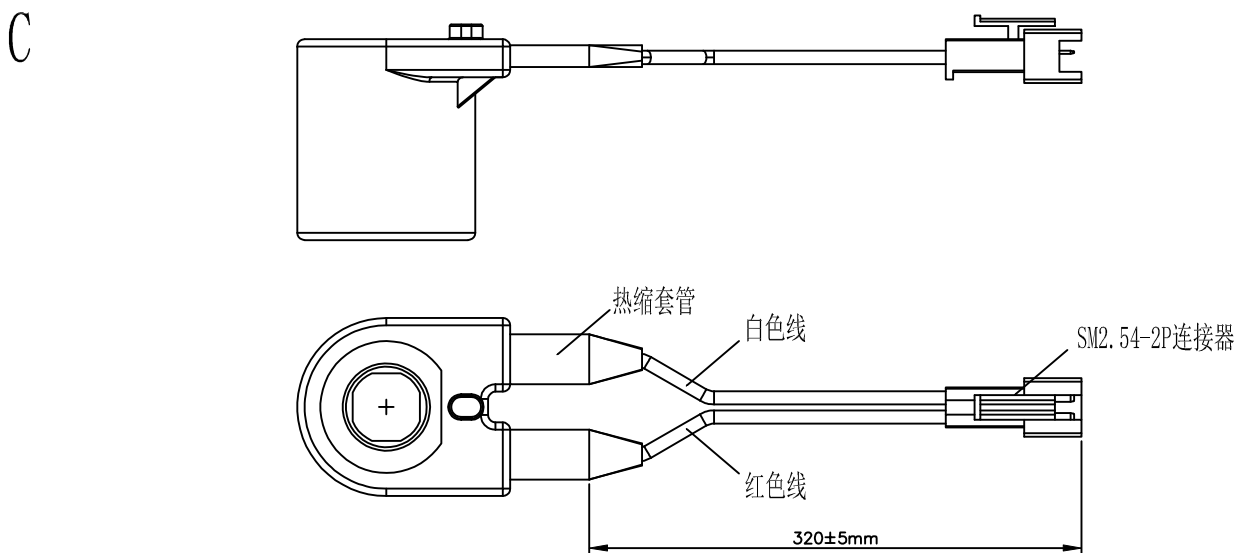
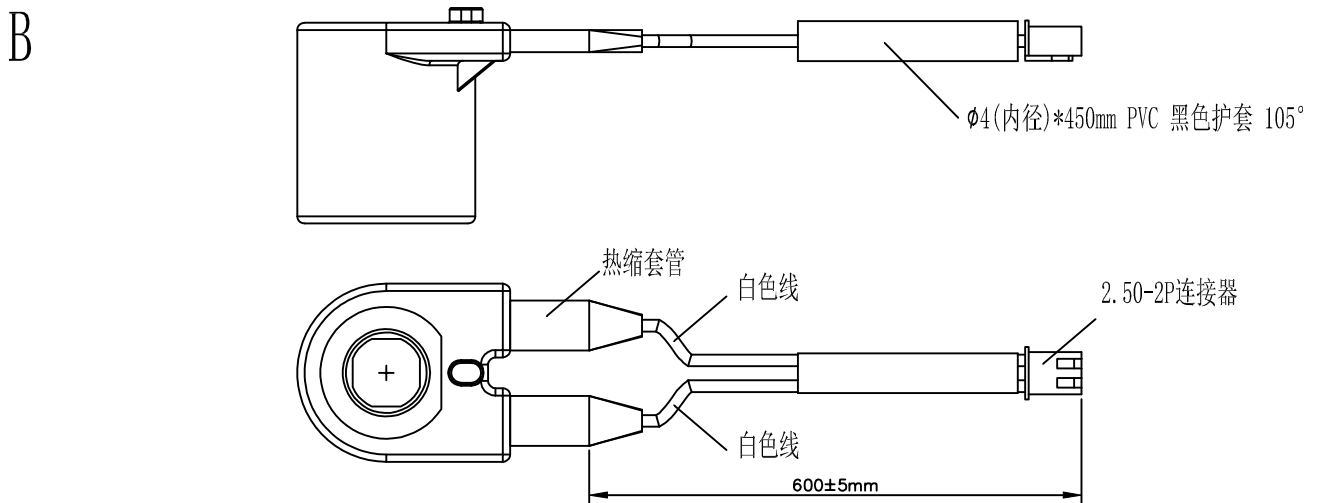
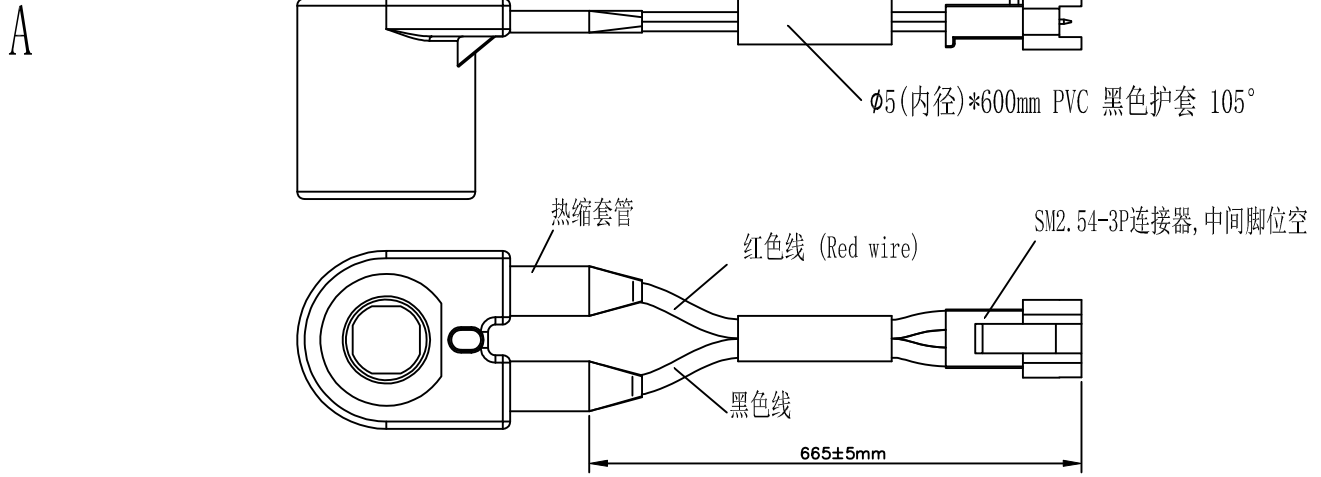
电压 (Rating voltage)	12VDC, 24VDC, 110VAC/50HZ, 200-240VAC/50HZ
类型 (Type)	常闭 (Normal close)
使用介质 (Medium)	(未结冰) 自来水; 地下水 (Liquid water); (Underground water)
动作特性 (Performance Characteristic)	当水压从0上升到0.3MPa±0.05MPa时, 开关断开; 当水压下降到0.25MPa以下时, 开关闭合。
使用压力 (Pressure range)	0~0.4MPa(0~4bar)
使用环境温度 (Ambient Temp.)	-25~55℃
最大介质温度 (Max. medium Temp.)	90℃
绝缘等级 (Insulation class)	Class "B" (130℃) / "F" (155℃) / "H" (180℃)
工作周期 (Duty cycle)	100% at 25℃ (for medium Temp.); Intermittent operation at 90℃ (for medium Temp.)
环保/卫生级别 (ROHS/Sanitation grade)	整体符合ROHS, 接触介质部分材料符合FDA及饮用水卫生安全 (Comply with ROHS. According to FDA & drinking water quality for The material of touching the medium)
管道连接方式 (Port size/amounting)	1/4"胶管快插式 G1/4 quick connector
安装固定方式 (Installation type)	可以利用顶部4个孔用螺钉固定 Use screw to fix the 4 holes on the top panel
其余 (Other)	客户要求 (Customizable)

### 外形尺寸DIMENSIONS (mm)





# 可选线圈引线类型 Coil Type







请传真至本公司售前服务部: 86-21-57629089

http://www.skswitch.com

电磁阀应用选型

The Information for solenoid valve choose

- 1、阀类型: 先导电磁阀  直动式电磁阀

Valve Function: Pilot type  Straight type
- 2、操作方式: 常闭  (断电关闭、通电打开) 常开  (断电打开、通电关闭)

Operation Option: Normal Close  Normal Open
- 3、线圈选配: 一般常温 (B级)  高温 (F级)  高温 (H级)

Coil Insulation Class: Class B(130°C)  Class F(155°C)  Class H(180°C)
- 4、线圈端子类型: 6.3\*0.8插片  引线SM2.54-3P连接器, 中间脚位空

Terminal Option: QC Terminal 6.3\*0.8  Wire Assy A(see P14)

引线2.50-2P连接器  引线SM2.54-2P连接器  客户定制

Wire Assy B(see P14)  Wire Assy C(see P14)  Customizable
- 5、电 压: 交流 AC \_\_\_ V 50/60HZ 直流 DC \_\_\_ V

Coil Voltage: 交流 AC \_\_\_ V 50/60HZ 直流 DC \_\_\_ V

电压值 (V) \_\_\_ 功率要求 \_\_\_

Voltage \_\_\_ Power \_\_\_
- 6、介 质: 空气  水  热水  (-°C) 蒸汽  煤气

Medium : Air  Water  Hot water  Vapor  Coal Gas

其他介质 \_\_\_\_\_

Other Medium \_\_\_\_\_
- 7、介质温度: \_\_\_ °C

Medium Temp: \_\_\_ °C
- 8、阀体材质: PP  POM  其他 \_\_\_\_\_

Merterial for valve: PP  POM  Other \_\_\_\_\_
- 9、密封橡胶件材质: 三元乙丙橡胶 EPDM  硅胶 SI  氟橡胶 VITON
- 10、压 力: 最小入口压力 \_\_\_ Mpa (或 \_\_\_ mm水柱)

Pressure :Min Pressure (or \_\_\_ mmH2O)

最大入口压力 \_\_\_ Mpa (或 \_\_\_ mm水柱)

Max Pressure (or \_\_\_ mmH2O)
- 11、连接尺寸: 内螺纹 G1/4  1/4英寸直杆  1/4英寸卡扣  其他 \_\_\_\_\_

Port connect type: G1/4  1/4" Hose  With 1/4"Connector  Other \_\_\_\_\_
- 12、流量要求: 额定压力差下 \_\_\_ Mpa 需要的流量 \_\_\_ L/min

Flow Rate: \_\_\_ L/Min at \_\_\_ Mpa
- 13、使用环境: 环境温度 \_\_\_ °C 室内  室外  水下  其他 \_\_\_\_\_

Use Environment:Temp \_\_\_ °C Room  Out of room  Under water  Other \_\_\_\_\_
- 14、其 他: \_\_\_\_\_

Others : \_\_\_\_\_

☑ 表示良好可用

☒ 表示不适用

空白: 表示资料不足

材料 介质	铜	铸铁	不锈钢	塑料	丁腈 橡胶 NBR	乙烷, 丙烯 EPDM	氟橡胶 VITON	特氟隆 PTFE
空气	☑	☑	☑	☑	☑	☑	☑	☑
天然气	☑	☑	☑		☑	☑	☑	☑
氧气	☑	☑	☑	☑	☑	☑	☑	☑
氢气	☑		☑		☑		☑	☑
城市煤气	☑		☑				☑	☑
工业煤气	☑		☑		☑			☑
氮气	☑		☑				☑	☑
精制石油	☑	☑	☑				☑	☑
普通水	☑	☑	☑	☑	☑	☑	☑	☑
水蒸汽	☑	☑	☑		☒	☑	☑	☑
饮用水	☑	☑	☑	☑		☑		☑
海水	☑		☑	☑	☑	☑	☑	☑
工业废水			☑				☑	☑
汽油	☑	☑	☑			☒	☑	☑
煤油	☑	☑	☑	☑	☑	☒	☑	☑
柴油	☑	☒	☑	☑	☑	☒	☑	☑
牛奶	☑	☑	☑	☑	☑	☑	☑	☑
酒	☑	☑	☑	☑	☑	☑	☑	☑
酒精	☑	☑	☑		☑	☒		☑
乙炔	☑	☑	☑		☑	☒	☑	☑
乙醇	☑	☑	☑		☑	☒	☑	☑
丙酮	☑	☑	☑		☑	☒	☒	☑
氨					☒			☑
甲苯	☑	☑	☑			☒	☑	☑
二甲苯	☑	☑	☑			☒	☑	☑
丙烷	☑	☑	☑			☒	☑	☑
甲烷	☑	☑	☑		☑	☒	☑	☑
二氧化硫	☑	☑	☑				☑	☑
氢氧化钠<20%		☑	☑		☑	☒		☑
硝酸<10%			☑				☑	☑
硫酸<20%							☑	☑
盐酸10%								☑
醋酸	☑	☑	☑		☑	☒	☑	☑